



# Competition Rules

## Season 2018 – Senior Football

(Revised on 31/03/2018)





1.	INTRODUCTION .....	5
1.1	PURPOSE .....	5
1.2	INTERPRETATIONS.....	5
1.3	COMPETITION MANAGEMENT .....	5
1.4	IMPOSITION OF SANCTIONS .....	6
1.5	BROADCAST MATCHES – COPYRIGHT .....	6
2.	REGISTRATION OF PARTICIPANTS AND CLUBS .....	7
2.1	PLAYERS .....	7
2.2	CLUB OFFICIALS AND TEAM OFFICIALS .....	7
2.4.	REGISTRATION PERIODS .....	8
2.5.	REGISTRATION DEADLINE .....	8
2.6.	PRIORITY OF REGISTRATION .....	9
3.	COMPETITION STRUCTURE .....	10
3.1	COMPETITION STRUCTURE AND NOMINATIONS .....	10
3.2	INSTITUTE AND NATIONAL TRAINING CENTRE (NTC) TEAMS .....	11
3.3	SENIOR COMPETITION .....	11
3.4	ALTERATIONS TO DRAWS .....	13
3.5	REPRESENTATIVE PLAYERS .....	13
3.6	POSTPONED MATCHES .....	14
3.7	TEAMS WITHDRAWING OR EXPELLED FROM COMPETITION .....	14
3.8	MATCH POINTS .....	15
3.9	FINALS SERIES .....	16
3.10	EXTRA TIME .....	17
3.11	VENUES AND ADMISSION CHARGES .....	18
4.	MATCH DAY .....	19
4.1	COACH ELIGIBILITY .....	19
4.2	PLAYER ELIGIBILITY .....	19
4.3	DETERMINATION OF MATCHES PLAYED .....	21
4.4	NUMBER OF PLAYERS .....	21
4.5	DURATION OF MATCHES .....	22
4.6	FAILURE TO PLAY A MATCH .....	23
4.7	ABANDONED MATCHES .....	23
4.8	TEAM SHEETS .....	24
4.9	MATCH SHIRTS .....	25
4.10	MATCH BALLS .....	27
4.11	MATCH OFFICIALS .....	27
4.12	FORFEITS .....	28
4.13	TECHNICAL AREA .....	29
4.14	INTERCHANGE AND SUBSTITUTIONS .....	30
4.15	MATCH REPORTS .....	30

5.	DISCIPLINE .....	31
5.1	FFA NATIONAL DISCIPLINARY REGULATIONS .....	31
5.2	YELLOW CARDS (CAUTIONS).....	31
5.3	RED CARDS (EXPULSION) .....	33
5.4	SUSPENSIONS .....	35
5.5	ASSAULTS ON MATCH OFFICIALS .....	36
6.	DISCIPLINARY COMMITTEE .....	37
6.1	NATIONAL DISCIPLINARY REGULATIONS .....	37
6.2	COMPOSITION OF DISCIPLINARY COMMITTEE .....	37
6.3	PROCESS FOR LODGING AN APPEAL .....	38
6.4	PROCEDURES OF THE DISCIPLINARY COMMITTEE .....	38
6.5	EVIDENCE .....	39
6.6	DECISION .....	39
6.7	APPEALS .....	40
7.	CHARGES AND DISPUTE RESOLUTION .....	41
7.1	LODGING A COMPLAINT OR CHARGE .....	41
7.2	PROTEST MATCH RESULTS .....	41
7.3	MISTAKEN IDENTITY.....	42
7.4	GRIEVANCE PROCEDURE .....	42
7.5	AMENDMENT OF RULES .....	42
8.	FINANCE .....	43
8.1	REGISTRATION FEES .....	43
8.2	MATCH FEES .....	45
8.3	PAYMENT OF INVOICES .....	45
8.4	SANCTIONS .....	45
8.5	FINES .....	46
8.6	GATE REVENUE .....	46
8.7	RECORD MAINTENANCE .....	46
8.8	BONDS .....	46
9.	INTERPRETATIONS AND DEFINITIONS .....	48
9.1	INTERPRETATIONS .....	48
	APPENDIX A – TABLE OF OFFENCES .....	49
	APPENDIX B - COMPETITIONS FINES .....	51

## DEFINITIONS

***Amateur*** means any Player who is not a Professional as defined in the National Registration Regulations.

***Away Team*** means the Team that is the second named on the draw.

***Board*** means the body made up of elected Directors of the Federation.

***Club*** means any Club registered with FFA in accordance with the National Registration Regulations from time to time. A reference to Club includes a Club admitted by a Competition Administrator to field a Team in a Competition.

***Club Official*** means any person involved with the administration, management or organisation of a Club (whether paid or unpaid), including employees, contractors, consultants, officers and directors, and representatives.

***Code of Conduct*** means the national football code of conduct as promulgated by FFA from time to time (a current version of which can be obtained on [www.footballaustralia.com.au](http://www.footballaustralia.com.au) or on request).

***Competition*** means any Competition or tournament registered with FFA in accordance with the National Registration Regulations for the Federation, including the pre- Season, Season proper, finals series and any post Season tournament or knockout cup Competition.

***Competition Administrator*** means the entity responsible for the conduct and staging of a Competition.

***Competition Rules*** means the rules governing the administration and conduct of a Competition under the auspices of the Federation.

***Delegate*** means the representative nominated by a Club to represent that Club at meetings and to be authorized to deal with the Competition Administrator or Federation regarding Club issues.

***Disciplinary Committee*** means the FFNT Disciplinary Committee constituted in accordance with the Grievance Resolution Regulations that has jurisdiction over the Competition.

***Disciplinary Regulations*** means the national football disciplinary regulations as promulgated by FFA from time to time (a current version of which can be obtained on [www.footballaustralia.com.au](http://www.footballaustralia.com.au) or on request).

***Federation or FFNT*** means the Football Federation Northern Territory Incorporated.

**FFA Statutes** means FFA's statutes and regulations as promulgated by FFA from time to time, including its constitution and by-laws and rules, and policies and procedures.

**FIFA** or **Federation Internationale de Football Association** means the world governing body of Football.

**FFA** or **Football Federation Australia** means the governing body of Football in Australia.

**FIFA Statutes** mean the statutes and accompanying standing orders and regulations promulgated by FIFA from time to time, including the Regulations on the Status and Transfer of Players, Code of Ethics, Disciplinary Code, Players' Agents Rules and Regulations Governing Match Agents.

**Grievance Resolution Regulations** means the regulations promulgated by FFA from time to time setting out the procedures applying to grievances and disputes in football (which can be obtained on [www.footballaustralia.com.au](http://www.footballaustralia.com.au) or on request).

**Home Team** means the Team that is the first named on the draw.

**Institute** means any national, state or territory institute or academy of the sport that has a football program including any national training center implemented by either FFA or a Member Federation.

**Junior** means Matches or Competitions including Small Sided Football and up to but not including Youth.

**Laws of the Game** means the laws governing or regulating the playing of Football as determined by FIFA, FFA, Federation and local rules as adopted from time to time.

A **match** means any Match staged, participated in, sanctioned by or played under the auspices of FFA, a Member Federation or a Competition Administrator.

**Match Official** means a Referee, assistant referee, fourth official, Match commissioner, referee inspector, selector, any person in charge of safety or any other person appointed by FFA, a Member Federation or a Competition Administrator to assume responsibility in connection with a Match.

**MyFootballClub** means the national registration system provided by Football Federation Australia.

**Professional** means a Player who is paid to play football as defined in the National Registration Regulations.

**Office of the Federation** means the postal address of the Federation being GPO Box 3105 Darwin NT 0801. **Officer of the Federation** means any Board Member or employee of the Federation.

**Official** means any Club Official and/ or Team Official.

**Player** means any person who is, from time to time, registered to a Club whether that person is male or female, junior or senior or an Amateur or Professional.

**Professional** means a Player who is paid to play football, as defined in the National Registration Regulations.

**Professional Player Contract** means the mandatory form of contract for the casual employment of a Professional as specified in the National Registration Regulations.

**Premier League** means the top-tier of Men's football in the Northern Territory.

**Registrar** means a person appointed by a Club as their representative for all matters relating to Player registrations.

**Referee** means a Referee duly appointed to officiate at a Match.

**Registration Period** means the period of time in which a Player must be registered with a Club as specified in these Rules.

**Regular Season** means the Matches played between the Clubs during the Season to determine the Clubs that compete in the Finals Series and includes all Matches played in the Season that is not in the Pre-Season, Cup Competitions or the Finals Series.

**Representative Team** means a Team representing a State or Territory, a region, or an Institute that participates in a Competition.

**Ring In** means a Player who plays under the name of another registered Player's name or a false name.

**Rules** mean Competition Rules.

**Season** means the period of time starting with the first Match of a Competition and ending on the last Match of that Competition.

**Senior** means Matches or Competitions for open-aged males or females and Youth Competitions.

**Team** means a squad of Players from a single Club competing in an authorised Federation Competition.

**Team Sheet** refers to Team Sheets or Match Cards.

**Team Official** means any personnel involved with the management, preparation or participation of a Club's Team (whether paid or unpaid), including the coaches, managers, medical staff (including Team or Match day doctor), physiotherapists, gear persons and other support staff.

**Weekday Fixture** means a Match scheduled to be played on a day other than those defined as a Weekend Fixture.

**Weekend Fixture** means a Match scheduled to be played on a Friday, Saturday or Sunday and on a Monday where that day is classified as a public holiday



## **1. INTRODUCTION**

### **1.1 PURPOSE**

The purpose of these Rules is to assist in the administration of Competitions under the control of Football Federation Northern Territory (*Federation*).

### **1.2 INTERPRETATIONS**

The Federation and Competition Administrator shall be at all times empowered to interpret these Rules to make such rulings as are deemed appropriate in the circumstances. Such rulings are to be documented and are subject to the appeal processes provided for within these Rules.

### **1.3 COMPETITION MANAGEMENT**

1.3.1 Football Federation Northern Territory is the Competition Administrator who will be responsible for the management of all Competitions.

1.3.2 The Competition Administrator will always ensure its objectives are consistent with the objectives of the Federation.

1.3.3 The Competition Administrator shall deal with Clubs, Officials and /or Players in respect of offenses and/or complaints and with any matter not otherwise specifically provided for in these Rules, including Clubs being held to account for the actions of its Officials, Players and/or supporters. After an inquiry if the Competition Administrator deems a Club has committed a breach of the provisions of these Rules or conducted itself in a matter prejudicial to the interests of football they may refer the matter to the Disciplinary Committee.

### **1.4 IMPOSITION OF SANCTIONS**

1.4.1 The Federation and Competition Administrator is empowered to impose sanctions in accordance with these Rules and Part V of the FFA Statutes. The sanction may be, but not limited to, a reprimand, fine, loss of points or expulsion from a Competition. Clubs, Officials or Players shall be entitled to appeal against a sanction pursuant to these Rules and FFA's Grievance Resolution Regulations.

### 1.5 BROADCAST MATCHES – COPYRIGHT

The copyright for all Matches under the jurisdiction of the Federation shall remain with the Federation. No such Match shall be telecast via live streaming or broadcast without the prior written consent of the Federation.

## 2. REGISTRATION OF PARTICIPANTS AND CLUBS

### 2.1. PLAYERS

- 2.1.1 All Players **must** be registered in accordance with the FFA National Registration Regulations.
- 2.1.2 For a registration to be deemed valid the Club Registrar must set the Player's status as being "Active".
- 2.1.3 All Match Officials must be registered in accordance with the FFA National Registration Regulations.

### 2.2. CLUB OFFICIALS AND TEAM OFFICIALS

- 2.2.1 All Club Officials and Team Officials **must** be registered within MyFootballClub.
- 2.3.1 Each Club must be registered with FFA in accordance with the FFA National Registration Regulations:
  - a) by completing the Prescribed Form *NRR 02 – Application for Registration of Football Club* located at [www.footballaustralia.com.au](http://www.footballaustralia.com.au). Tab on About FFA then tabs on Statutes and Regulations.
  - b) for a newly formed Club, completing and lodging this form to the Federation prior to the commencement of their inaugural Season in accordance with the rule 2.4.3
  - c) Club names must be approved by the Federation, after being reviewed in accordance with FFA directives.
  - d) Every Club shall commence the FFA NCAS Level 1 accreditation process during 2017;
- 2.3.2 A Club must apply to the Competition Administrator for approval to enter Competition under the jurisdiction of the Federation.
- 2.3.3 Clubs who wish to nominate for:
  - a) Premier League - shall apply for entry in accordance with the Norzone Football Premier League Admission Process, and entry may or may not be granted at the discretion of the Competition Administrator.

- b) Division 1 League – shall apply for entry direct to the Federation in accordance with the FFA National Registration Regulations.

2.3.4 The Federation may require a Club to lodge a bond to compete in Competitions. Any such bond is required to be paid prior to any Team representing that Club participating in any Competition including pre-Season and/or friendly Matches.

## 2.4. REGISTRATION PERIODS

- 2.4.1 Senior Amateur Players can only be registered between 1 January to 30 July of the competition year.
- 2.4.2 Junior Amateur Players can only be registered between 1 January and the last day of the regular Season.
- 2.4.3 A Professional Player can only be registered from 8<sup>th</sup> of January to 5<sup>th</sup> of February.
- 2.4.4 A Club that wishes to register an Amateur Player outside of the designated Registration Period must lodge a written request to the Competition Administrator for prior approval. The Competition Administrator's decision shall be final and non-appealable.

## 2.5. REGISTRATION DEADLINE

- 2.5.1 A Player's registration must be made active by the Club via MyFootballClub at least two (2) working days before that Player to be eligible to play in the next round of scheduled Matches.

## 2.6. PRIORITY OF REGISTRATION

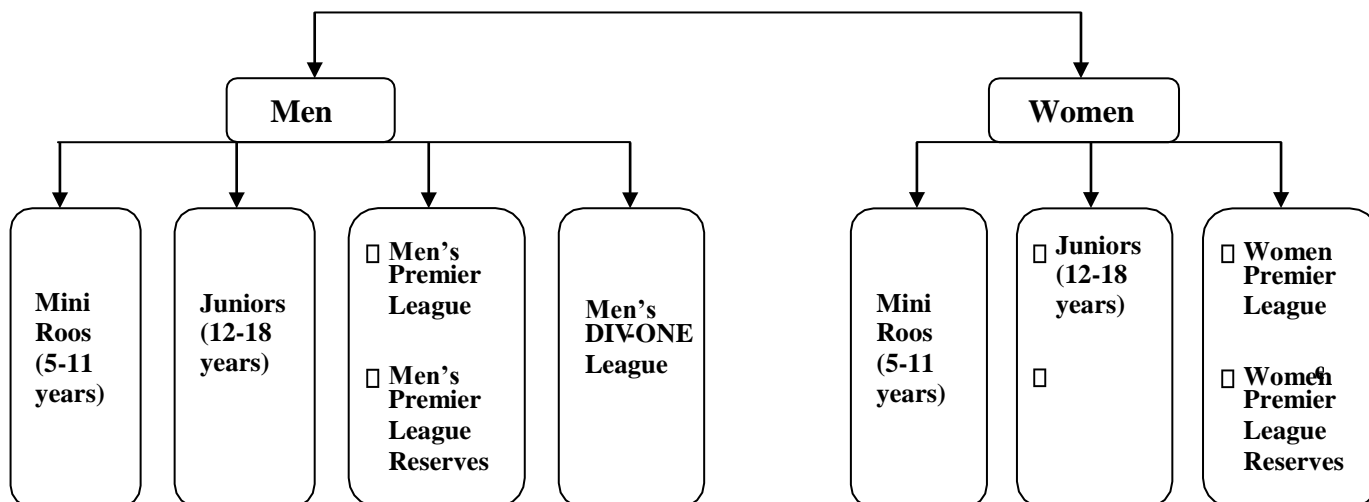
- 2.6.1 A Player can only be registered with one Club at a time in accordance with the FFA National Registration Regulations.
- 2.6.2 If a Player registers with more than one Club priority of registration shall be accorded to the Club that first registered the Player in accordance with the FFA National Registration Regulations.

2.6.3 A Club that knowingly induces a Player to sign an FFA registration form in the knowledge that the Player has already registered with another Club shall be fined \$500 per offense.

2.6.4 The Federation, at its discretion, may sanction a Player that is registered for more than one Club at any given time during the Season.

### 3. COMPETITION STRUCTURE

#### 3.1. COMPETITION STRUCTURE AND NOMINATIONS



3.1.1 The Federation will conduct Competitions for Seniors in consultation with the Clubs participating in the Competitions and based on the annual Team registrations for the relevant Competition Season.

3.1.2 Clubs are required to nominate Teams to be included into Competitions. Clubs must submit their nominations to the Competition Administrator by 16<sup>th</sup> of March 2018. Any requests to change after 16<sup>th</sup> of March shall be considered. A Club that makes a second change shall be fined a \$250.00 administration levy.

## 3.2. INSTITUTE AND NATIONAL TRAINING CENTRE (NTC) TEAMS

3.2.1 Institute and NTC Teams may apply to participate in a Competition. The Competition Administrator and the Federation shall allocate these Teams to the most appropriate Competition. NTC Teams in the Senior Competition will play for points and at the discretion of the Competition Administrator, may be eligible for their respective Final Series.

## 3.3. SENIOR COMPETITION

### 3.3.1 Premier League

- a) The Premier League competition shall be capped at eight (8) Teams.
- b) No Club shall have any more than one Team participating within this Division.
- c) The Federation may reject the application of any Club to participate in the Premier League. The Competition Administrator's decision shall be final and not appealable.
- d) (i) From 2018 the "One Team One Weekend" rule will apply in the Premier League.

After 3 rounds, Clubs pick their top 5 players and provide this list to FFNT for validation and verification. These top 5 players can only play for one team on each weekend. Be that Premier League or Premier Reserve grade. If a top five player has a long-term injury then Clubs must nominate a replacement for review by FFNT.

(ii) Note: Each nominated MPL team must have a minimum 18 registered MPL players. No MPL player (see 3.3.3.a) can play in Division 1.

(iii) Note: where a Club's MPL side has a bye and their MPLR side has a game the Club is not permitted to stack the MPLR side with MPL players. Penalty for stacking is \$500.00 and loss of 3 competition points. For clarification stacking involves playing more than three (3) players from the minimum 18 registered MPL playing group in the MPLR match. This rule will apply from round one.

### 3.3.2 Premier League Reserves

- a) This is the reserve grade for Premier League.
- b) The Premier League Reserves competition shall be capped at eight (8) teams.
- c) All Reserves players can play down but from round 1, five (5) players must be nominated each week and those players are the ones that can play down that weekend. Each player can play down a maximum of 5 times.

Note: all reserve players may play up as many times as the coaches require from round 1.

- d) Players registered into the Premier League Reserves competition, shall be permitted to play in the Premier League and Division 1 competitions.

### 3.3.3 Division 1 League

- a) Players registered in Premier League Men are not eligible to play in Division 1 competition with the exception of the MPL Goalkeeper who may play outfield after seeking permission from Competition Administrator.
- b) From 2018 the “5 for 5 rule” will apply. 5 Division 1 players are nominated after 3 rounds as the players that can play up on 5 occasions for 25 opportunities for the MPL and MPLR coaches to utilize. These core 5 are the clubs best 5 Division 1 players. FFNT Technical Director will vet. If a 5 for 5 player has a long-term injury then the Clubs must nominate a replacement for review.

Please refer to clause 3.3.4 Deregistration for intra-Club player movements.

- c) One team clubs can apply to enter the Division 1 League in accordance with Regulation 2.3.1 (b)
- d) The maximum number of teams in this competition shall be at the discretion of the Competition Administrator/Federation.

### 3.3.4 Deregistration

- a) Every Team shall have a maximum of 5 intra-club player de-registrations allotted per team. After the maximum de-registrations, a \$250 administration fee shall be applied per player deregistration.
- c) This administration fee may be waived by the Competition Administrator under extenuating circumstances. Examples of extenuating circumstances include but are not limited to, long term player injuries and intrastate, interstate or international player movement.
- c) The Competition Administrator shall review submissions from Clubs claiming extenuating circumstances on a case by case basis.
- d) All Club submissions should be made in writing to the Competition Administrator, who will respond to the Club within ten (10) working days of receipt of finalised documentation from the Club.



- e) The Competition Administrator's ruling on extenuating circumstances shall be binding and non-appealable.

### 3.4. ALTERATIONS TO DRAWS

3.4.1 Once fixtures have been published, no changes may be made unless otherwise provided for in these rules. A club may request a fixture change if it can demonstrate exceptional circumstances, in writing, not less than four weeks prior to the scheduled kick-off date.

This request may or may not be approved by FFNT in its discretion.

3.4.2 Any request for a fixture change must be accompanied by written consent from the opposition club.

3.4.3 A club, which has been granted a fixture change, is responsible for all costs associated with the rearranged fixture. Failure to comply with 3.4.2 may result in the request being rejected outright further consideration.

3.4.4 The Competition Administrator shall determine the date, time and venue for any re-scheduled match to be played. The Club that requested the re-scheduling of Match shall meet all costs incurred because of the re-scheduling of Match.

3.4.5 All rescheduled Matches must be played prior to the last Competition round of the Regular season.

3.4.6 Decisions of the Competition Administrator under Rule 3.4 are final and shall be binding and not appealable.

### 3.5. REPRESENTATIVE PLAYERS

3.5.1 In the event of a Team having three (3) or more Players selected into a Federation Representative Team, it shall have the right to apply to the Competition Administrator for deferment of a Match that is affected, or likely to be affected, by the selection of those Representative Players. Such requests are not subject to the minimum timeframes specified within Rule 3.4.

3.5.2 Decisions of the Competition Administrator under Rule 3.5 shall be binding and are non-appealable.

### 3.6. POSTPONED MATCHES

3.6.1 In the event of a Match not being played due to weather or other causes over which neither Team has any control, or in the event of a Match that is ordered to be replayed, the Match shall be played as determined by the Competition Administrator.

3.6.2 All postponed Matches shall be played prior to the last Competition round of the Regular Season.

3.6.3 Decisions of the Competition Administrator under Rule 3.6 shall be binding and not appealable.

### 3.7. TEAMS WITHDRAWING OR EXPELLED FROM COMPETITION

3.7.1 For the purpose of this Rule the term “removed” shall include a Team that has withdrawn or been expelled from a Competition.

3.7.2 If a Team is removed from a Competition on or before the point of the Season at which all Teams have played each other once a “bye” will be inserted to replace the removed Team in the fixture list, and all points along with goals scored (for & against) that Team will be erased. Any Player votes gained in Matches involving the removed Team will be erased.

3.7.3 If a Team is removed after the point of the Season at which all Teams have played each other once a “bye” will be inserted to replace the removed Team in the fixture, and:

- a) All points along with goals scored (for & against) that Team before the point of the Season at which all Teams have played each other once will remain.
- b) Everything points along with goals scored (for & against) that Team after the point of the Season at which all Teams have played each other once will be erased.
- c) withdrawing a Team a Club shall incur a \$1000 fine for withdrawing a Team for an on-going competition.

3.7.4 Decisions of the Competition Administrator under Rule 3.4 are final and shall be binding and not appealable.

### 3.8 MATCH POINTS

3.8.1 In all Competition fixtures where points are accrued Match points will be awarded as follows:

<b>RESULT</b>	<b>POINTS</b>
WIN	3 POINTS
DRAW	1 POINTS
LOSS	0 POINTS
BYE	0 POINTS
NO RESULT	0 POINTS

3.8.2 The Competition Administrator reserves the right to record any fixture as a “No Result”.

3.8.3 The Team with the greatest number of points at the end of the Competition shall be declared as competition “Premiers”.

3.8.4 If two (2) or more Teams are levels on points at the end of the Regular Season the following criteria shall be applied, in order, until one of the Teams can be determined as the higher ranked:

- a) highest goal difference;
- b) lowest number of red cards accumulated
- c) lowest number of yellow cards accumulated
- d) highest number of goals scored
- e) highest number of points accumulated in matches between the Teams concerned
- f) highest goal difference in matches between the Teams concerned

- g) highest number of goals scored in matches between the teams concerned
- h) toss of coin

### 3.9 FINALS SERIES

- 3.9.1 To be eligible to play for a Team in the final series the rules from in-season continue to apply. For example, no MPL player can play finals in Division 1. A Club's top 5 MPL players can only play for one team on each weekend of the finals. Be that Premier League or Premier Reserve grade. Reserve grade players can play up for finals. Reserve grade players can play down for finals as long as the 5 players are nominated before each final and that the players nominated have not played more than 5 times for the Division 1 side. Division 1 players may play up in finals. A player cannot switch between Division 1 teams within one club for the finals. There is unrestricted movement between WPL and WPLR during the finals.
- 3.9.2 Cup Matches are not included when determining the number of Matches played (FFA Cup Rules).
- 3.9.3 A Player can qualify for only one final series except in accordance with provisions of Regulation 3.9.1.
- 3.9.4 Should a Team that is eligible for the final series be unable to participate then the Competition Administrator may replace that Team with the next best- placed Team from within the same Competition.

3.9.7

Teams that placed third and fourth shall play in the Minor Semi-Final
Teams that placed first and second shall play in the Major Semi-Final with the winning Team proceeding directly to the Grand Final
The losing Team in the Major Semi-Final and the winner of the Minor Semi-Final shall play in the Preliminary Final
Winner of the Preliminary Final shall play the winner of the Major Semi-Final in the Grand Final
The winner of the Grand Final shall be declared as competition “Champions

**TABLE: FINAL SERIES**

- 3.9.8 If scores remain level after normal playing time, extra time as specified in these Rules shall be played to determine a winner.
- 3.9.9 If after extra time the Match is still drawn, the winner shall be determined by penalty kicks in accordance with the Laws of the Game.
- 3.9.10 Where both Teams field an ineligible Player in a semi-final, or the result of a semi-final is declared a ‘no result’ then the winner of the other semi-final shall be declared as competition “Champions”.
- 3.9.11 Extra time applies to MPL, WPL, MPLR and WPLR only. Division 1 go straight to penalties.

3.10 EXTRA TIME

- 3.10.1 Extra time to determine the winner of a Match shall be played in all Premier League division final series Matches only and the following shall apply:

- a) Two equal periods of fifteen (15) minutes shall be played.
- b) At the completion of normal time, a five (5) minute break shall be granted. All Players are to remain on the field and only the designated Team Officials from within the technical area can move onto the field of play. Substitutes or substituted Players are not permitted to enter the field of play.
- c) A coin shall be tossed to determine the direction of play for the first period of extra time.
- d) After the first period of extra time, the Teams shall change ends immediately. There shall be no half time break within extra time.
- e) Stoppage time shall be played.
- f) If scores remain equal at the conclusion of both periods of extra time, penalty kicks will be taken in accordance with the Laws of the Game to determine the winner of the Match.

### 3.11 VENUES AND ADMISSION CHARGES

3.11.1 The Competition Admission, in consultation with the Federation and Clubs, shall have the power to determine venues for all Competitions.

3.11.2 The Competition Administrator, in consultation with the Federation Clubs, shall determine the charge for admission to all Matches, at all venues, prior to the commencement of any Season.

3.11.3 Players or Club Officials who refuse to pay the prescribed admission charge shall be fined \$100/offence. The Competition Administrator may also apply further sanctions.

3.11.4 Clubs with which the Player or Club Official is associated shall also be fined \$100/offence. The Competition Administrator may also apply further sanctions.

PLAYERS	\$5
ADULTS	\$8
CHILDREN (15 and under)	free
STUDENTS/PENSIONERS	\$5
FAMILY PACKAGES	TBC

**TABLE: ENTRY FEE STRUCTURE**

## **4. MATCH DAY**

### **4.1. COACH ELIGIBILITY**

4.1.1 From 2019, the minimum acceptable accreditation for a Club Coach of a Premier League Men's, Reserves or Women's Team shall be the FFA Senior Football Certificate. Note: All Premier League Coaches shall be registered into the MyFootballClub system.

4.1.2 Any Club that fields a Team, where the Club Coach does not comply with rule 4.1.1, shall forfeit all match day points within that round of competition.

4.1.3 Any Club Coach, who fails to comply with rule 4.1.1, shall not be permitted to enter the field of play, Player's race, change rooms, technical area or substitute bench at any time before, during or after a Match.

### **4.2. PLAYER ELIGIBILITY**

4.2.1 A Player is only eligible to play in a Match for a Club if they:

- a) have been registered in accordance with the FFA National Registration Regulations;
- b) has paid their full registration fee plus all outstanding money owed to the

Federation and Competition Administrator:

- c) are not subject to a suspension;
  - d) in accordance with rule 3.1; meet the applicable Competitions age group and gender guidelines;
  - e) meet Competition requirements for Final Series or playoffs, where applicable.
- 4.2.2 It is the responsibility of each Club to ensure the eligibility of its Players in accordance with these Rules.
- 4.2.3 Where a Club(s) believes that a player who is younger than 14 has the capacity to safely and competitively play within this competition, the Club(s) may apply to the Competition Administrator for a technical assessment
- 4.2.4 Where a Club has more than one Team within the same Competition the club must nominate which Players shall play for each Team. Players are eligible to play up for another Club Team but Players are not eligible to play for any other Club Team within the same division or a lower division.
- 4.2.5 If there is a dispute about the eligibility of any Player, the Match Official must note the details on the Team Sheet and submit the Team Sheet to the Competition Administrator.
- 4.2.6 Any Club that wishes to lodge an official protest regarding the eligibility of a Player must do so in accordance with these Rules.
- 4.2.7 Any Club found to have played an ineligible Player shall be fined \$250 and the Match shall be awarded to the opposing Team with a score of 3-0 or the actual score of the Match, whichever is the greater.
- 4.2.8 Any Club found to have knowingly or willfully engaged in the “Ring-In” of a Player or Players in any Match shall be fined \$500.00 and the Match shall be awarded to the opposing Team with a 3-0 score or the actual score of the Match, whichever is the greater. The Club may also be cited to appear before the Disciplinary Committee.



4.2.9 Repeat offenders may incur additional sanctions, as determined by the Competition Administrator.

#### 4.3. DETERMINATION OF MATCHES PLAYED

Only Players who are recorded on an official match card may take the field of play during a Match. Players listed on an official match card shall be deemed to have actually participated when calculating the number of qualifying Matches played. The official Team Sheet or sportsTG Log Report shall be the sole record and determinant of Matches played.

4.3.1 Decisions of the Competition Administrator under Rule 3.4 are final and shall be binding and not appealable.

#### 4.4. NUMBER OF PLAYERS

4.4.1 A Competition Match may not start if either Team consists of fewer than seven (7) Players.

4.4.2 A Competition Match may not continue if either Team has fewer than seven (7) Players.

4.4.3 If a Match has commenced and is subsequently abandoned due to a Team being reduced to fewer than seven (7) Players, then the offending Team shall be deemed to have forfeited the Match and shall be sanctioned in accordance with Rule 4.11.

## 4.5. DURATION OF MATCHES

4.5.1 The duration of all Matches shall be as specified in Appendix A unless otherwise specified in the playing conditions of the Competition.

COMPETITIONS	FIELD	NUMBER OF PLAYERS	SUBSTITUTIONS	PLAYING TIME	HALF TIME	BALL SIZE
MENS/ WOMENS LEAGUE	100 * 64 METERS	<ul style="list-style-type: none"> <li>• 11 * 11</li> <li>• MINIMUM OF 7 AND MAXIMUM OF 11 ON FIELD</li> </ul>	MAXIMUM 5 SUBSTITUTES	2 * 45 MINS	15 MINS MAXIMUM	5 (PRESSURE EQUAL TO 8.5 psi – 15.6 psi)
MENS/ WOMENS LEAGUE RESERVES			UNLIMITED DURING THE MATCH			
DIVISION MENS						

**TABLE: COMPETITIONS STRUCTURE**

#### 4.6. FAILURE TO PLAY A MATCH

- 4.6.1 Any Team who without just cause fails to play a Match at the appointed date and time shall be deemed to have forfeited the Match.
- 4.6.2 The Club shall be fined \$500 and Match Officials shall be entitled to the Match fees normally payable and these fees shall be paid by the Team that forfeits the Match. Where a forfeited match is scheduled to be played at a Duty Club managed venue, the Duty Club shall be entitled to \$250 from the \$500 fine.
- Any Team who has forfeited three (3) consecutive matches shall be asked to show cause as to why they should not be suspended or expelled from the Competition.

#### 4.7. ABANDONED MATCHES

- 4.7.1 Matches in any Competition including final series may only be abandoned by a decision of the Match Official.
- 4.7.2 A Team, or members thereof, who due to their conduct cause a Match to be abandoned shall be deemed to have forfeited the Match.
- 4.7.3 If both Teams are responsible for conduct that leads to the abandonment of a Match then the Match shall be deemed a “no contest” and no points shall be awarded to either Team and no Player points shall be gained from the Match. Additional sanctions may also be imposed by the Competition Administrator.
- 4.7.4 If a Match has been abandoned then Match reports are required to be submitted to the Competition Administrator, by Match Officials and Team officials, no later than 5.00pm of the second business day following the Match.
- 4.7.5 If 72 minutes or more of normal time of a Match has been played then the score at the time of abandonment will stand. Normal time does not include time added or halftime.
- 4.7.6 If less than 72 minutes of normal time of a Match has been played before the time of abandonment, then the Match will be replayed in full at a time and venue to be determined by the Competition Administrator.

#### 4.8. TEAM SHEETS

- 4.8.1 Each Team shall submit a completed Team Sheet to the Match Referee 30 minutes prior to the commencement of each Match. Clubs found to be in breach of this rule shall be fined \$200 per offence. Teams in Senior Competitions shall use the “Team Sheet” format prescribed by the Competition Administrator.
- 4.8.2 Players cannot be added to the Team Sheet after the commencement of the Match.
- 4.8.3 The maximum number of Players that can be listed per Team on a Team Sheet is specified in Regulation 4.5.1.
- 4.8.4 In case, sportsTG unable to produce team sheet then manual hand-written team sheet is preferable under competition administrator supervision.
- 4.8.5 The numbers on the back of shirts shall correspond with the numbers on the Team Sheet and any change to a number must be done with approval of the Match Referee.
- 4.8.6 The only Players entitled to play in any Match are those registered Players who are listed on the Team Sheet before the commencement of the Match.
- (a) Teams that field a Player contrary to this Rule shall be deemed to have played an ineligible Player. 4.8.7 At the conclusion of the Match the Referee shall note the scores at half time and fulltime, the goal scorers, any disciplinary action then sign the team sheet, enter results on sportsTG and lodge the team sheet with the Competitions administrator. In the event a referee is not appointed for a match; hoem team official will be responsible for fulfilling within rule 4.8.6. Clubs found to be in breach of this rule shall be fined \$100.00
- 4.8.8 When a Player has been cautioned or sent off the Referee shall note on the Team Sheet the appropriate offense code for which the Player was cautioned or sent off. The Referee shall submit an Incident Report for the send-off offense to the Competition Administrator, in accordance with Rule 4.15.2.
- 4.8.9 An accredited Sports Trainer shall be registered for every team participating in the Men’s Premier League competition and a First Aid Certified person shall be

registered for all Women's and Reserves Premier League Teams. The Sports Trainer shall not be a player recorded on the playing team sheet. Teams found to be in breach of this rule shall have from 2019 1 competition point deducted per offense. The accredited sports trainer should be registered on My Football Club; only registered sports trainer shall be allowed in the competition areas.

#### 4.9. MATCH SHIRTS

- t
- 4.9.1 Each Club shall register "Home" and "Away" its playing uniform with the Federation prior to the commencement of the Season. This shall include the shirt, shorts, and socks.
  - 4.9.2 All Clubs must nominate a "Home" and "Away" playing uniform. The away playing uniform shall not clash with the home team playing uniform. A club's away playing uniform for players and a goal-keeper should preferably include a change of color for shirts, shorts and socks.
  - 4.9.3 It is a responsibility of the Away Team to ensure that an alternative playing uniform is available for each match day.
  - 4.9.4 In all cases the goal keeper must be clearly distinguishable from the colour of shirts worn by all other players and the referee.
  - 4.9.5 Where the competition Administrator deems a club's proposed uniform to be too similar to another club it may veto use of the proposed uniform.
  - 4.9.6 The Competition Administrator reserves the right to require all Club Teams to place a competition sponsorship logo on the right-hand breast or on the right sleeve of all match shirts in accordance with given uniform style guide.

# Front

# Back



## STANDARD SHORTS STYLE GUIDE

### Front

### Back

### Left

### Right



## STANDARD T-SHIRT STYLE GUIDE

### 4.10. MATCH BALLS

The Home Team shall provide the Match Officials with four (4) approved Match balls in accordance with regulation 4.5.1(Competition Structure). Clubs found to be in breach shall be fined \$100 /offense.

4.11. MATCH OFFICIALS

4.11.1 All Match Officials must be registered in accordance with the FFA National Registration Regulations.

4.11.2 FFA accredited Match Officials shall be supplied wherever possible, subject to available numbers as follows;

Senior and Reserves Matches	a Referee and two assistant Referees
Final Series	A Referee, two assistant referee and a fourth Official.

4.11.3 Priority of Match Officials allocation shall be: 2018

Competition Structure

- a) Premier League Competition – Men and Women
- b) Premier Reserves
- c) All other Senior Competitions

4.11.4 In the event no accredited Match Official is present to officiate a Match the Home Team shall appoint a Referee to take charge of the Match. This shall take place within five (5) minutes of the scheduled kick-off time.

4.11.5 In circumstances where an Assistant Referee has not been appointed each Team is obliged to provide a Club Assistant Referee to assist the Referee as follows:

- a) If one Assistant Referee has not been appointed the Home Team shall provide an Assistant Referee.
- b) If two Assistant Referees have not been appointed both the Home and Away Teams shall provide one Assistant Referee each.

4.11.6 Teams found to be in breach of rules 4.11.4 and 4.11.5 shall be fined \$250

for failing to provide a Match Official(s).

4.11.7 Teams are obliged to play Matches regardless of whether the Competition Administrator Appointed Match Officials are present to officiate. Such Matches are to commence within ten (10) minutes of the scheduled kick-off time.

#### 4.12. FORFEITS

4.12.1 Where a Match has been declared a forfeit the Match shall be recorded as a win to the non- forfeiting Team with a score of 3-0.

4.12.2 Any Team deciding to forfeit a scheduled Match shall inform the Competition Administrator in writing by 5 pm of the Wednesday prior to a weekend fixture or no later than 2 working days prior to the scheduled kick-off time of a weekday fixture.

a) A Team failing to notify the Competition Administrator within the required time Shall be fined \$300.

4.12.3 A Team not ready to commence a Match within ten (10) minutes of the scheduled kick-off time shall be deemed to have forfeited the Match and shall be fined \$300.

a) Where a match has commenced and a Team has fewer than the minimum number of Players required for completion of the Match, the Match shall be awarded to the opposing Team with a score of 3-0 or the actual score of the Match, whichever is greater.

4.12.4 Where a Match is forfeited under this Rule all appointed Match Officials shall be entitled to the Match fees normally payable and these fees shall be payable by the Club which forfeits the Match.

#### 4.13. TECHNICAL AREA

4.13.1 The following rules shall be enforced where technical areas are provided at venues. Players and Officials shall be registered of MyFootballClub and shall be subject to FIFA Laws of the Game whilst sitting on the Team bench or present within the Team technical area.



- 4.13.2 A maximum of nine (9) persons comprising five (5) Players and four (4) Team Officials are entitled to sit on the Team bench or be present within the Team technical area during any Match. Players and Team Officials are to remain seated at all times during a Match, whilst in the Team technical area, with only one (1) Team Official allowed to stand within the Team technical area to relay instructions.
- 4.13.3 All Players and Team Officials shall be suitably attired when present within the Team technical area. All Players must wear their Club match uniforms, boots and substitute bibs. All Team Officials shall wear closed shoes, shorts and their Club polo shirt as a minimum acceptable standard. Note: thongs, sandals or work boots are not recognized as meeting the minimum acceptable standards and bare feet are strictly prohibited at any time throughout a Match. Clubs which fail to comply with this rule shall be fined \$250 per offence and additional sanctions may apply for repeat offences.
- 4.13.4 Team Officials not listed onto the Team Sheet shall not be permitted to sit on the Team bench or to be present within the Team technical area or the competitions area at any time during the Match. Clubs which fail to comply with this rule shall be fined \$250 per offence and additional sanctions may apply for repeat offences.
- 4.13.5 Players and Officials within the Team Technical Area and the Competitions Area shall behave in a responsible manner and shall not use offensive, insulting and abusive language and/or gestures at any time. Clubs which fail to comply with this rule shall be in breach and shall be fined \$250 per offence and additional sanctions may apply for any repeated offences. Any Team Official that is expelled from the field of play, being the Team technical area, shall incur a minimum one (1) match suspension. The official shall be fined a minimum of \$100.
- 4.14. INTERCHANGE AND SUBSTITUTIONS
- 4.14.1 All interchange or substitute Players shall be named on the Team Sheet and shall sit on the Team bench with a neutral colour vest within the designated Team technical area throughout the Match.

4.14.2 All substitutes or interchanges are to be made known to the assistant Referee or fourth official who shall then notify the Referee of the proposed substitution or interchange.

4.14.3 All substitutions or interchanges within Competitions are at the discretion of the Referee and shall take place at the halfway line after the Referee has stopped play and signaled for the substitution to occur.

#### 4.15. MATCH REPORTS

4.15.1 Match reports shall be submitted to the Competition Administrator by 5.00pm of the first business day following the Match for which the report is being lodged.  
Collection Venue: Darwin Football Stadium – Red Mail Box (GATE A-tickets)  
Appendix C

4.15.2 Match reports include:

Send Off reports by Match Officials Incident reports by Match Officials

## 5. DISCIPLINE

### 5.1 FFA NATIONAL DISCIPLINARY REGULATIONS

5.1.1 The FFA National Disciplinary Regulations shall apply to any infringement of the Laws of the Game by any Player or Official.

5.1.2 The Club shall be responsible for any fine to their registered Player or Team Official.

### 5.2. YELLOW CARDS (CAUTIONS)

5.2.1 Sanctions

The following sanctions shall be imposed as a result of Players accumulating cautions during a Season:

Fifth (5 <sup>th</sup> ) caution	one (1) Match suspension and a \$100 fine payable by the Club.
Seventh (7 <sup>th</sup> ) caution	two (2) Match suspension and a \$200 fine payable by the Club.
Ninth (9 <sup>th</sup> ) caution	three (3) Match suspension and a \$300 fine payable by the Club.
Tenth (10 <sup>th</sup> ) caution	the Player shall be cited to appear before a Disciplinary Committee and shall be suspended until a Disciplinary Committee adjudicates on the matter.

- 5.2.2. For the purpose of this Rule cautions shall accumulate across all divisions including FFNT Cup Matches and the fines and the automatic suspensions specified are non-appealable.
- 5.2.3 If a Player receives two yellow cards during the same Match and therefore receives a red card, the two yellow cards shall be expunged from the Player’s record.
- 5.2.4 If a Player receives a yellow card then a direct red card in the same match, the yellow card will not be expunged and will be counted within the Player’s accumulation of yellow cards.
- 5.2.5 Where a Player has incurred a sanction under Rule 5.1.1 the Competition Administrator shall advise the Player’s Club by 5.00 pm of the third business day after the receipt of the Team Sheet for the Match.
- 5.2.6 A Player shall remain suspended until any fine is paid in full to the Competition Administrator.
- 5.2.7 Accumulated cautions shall not carry over from the regular Season Competition into final series or promotion/relegation Matches.
- 5.2.8 If a Player transfer to another Club participating in a Competition during a Season:
- a) Cautions are transferred with the Player for the purpose of Rule 5.2.1

- b) Cautions are retained by the Club to which the Player was registered when the caution was received for the purpose of Rule 5.1.8.

#### 5.2.9 Loss of Competition Points as a Result of accumulated Yellow Cards

- a) Teams shall have Competition points deducted as a result of accumulating cautions during the regular Season.
- b) The number of cautions that leads to the initial loss of Competition points shall be determined by taking the number of rounds in the regular Season and multiplying that number by two (2). This shall be known as the “Team Caution Limit”. For example, if there are fifteen (15) rounds of Matches then the Team Caution Limit shall be thirty (30).
- c) When a Team has accumulated the number of cautions that equal the Team Caution Limit one (1) Competition point shall be deducted.
- d) One (1) Competition point shall be deducted for every ten (10) additional cautions accumulated by a Team in excess of the Team Caution Limit during the remainder of the Competition Season.

### 5.3. RED CARDS (EXPULSION)

5.3.1 The FFA National Disciplinary Regulations, ‘Disciplinary Table of Offences’, prescribes the mandatory minimum Sanction for send-off offences and offences against a Match Official.

5.3.2 A player who receives a red card must serve a mandatory match suspension.

5.3.3 Where a Player is sent off (issued a red card) during a Match, they are deemed to be an ineligible Player until the final scheduled Match of the round is completed. This means that they are not eligible to participate in any Competition in any official capacity, including but not limited to Player, Coach, Team Official, Match Referee, Assistant Referee or Ground Official.

#### 5.3.4 Player Sanctions

- a) The FFA National Disciplinary Regulations, ‘Disciplinary Table of Offences’,



Expulsions are transferred with the Player for the purpose of 5.2.2, and Expulsions are retained by the Club to which the Player was registered when the expulsion was received for the purpose of 5.2.5.

- c) Team Sanctions:
  - i. Loss of Competition Points as a Result of Red Cards
  - ii. Teams shall have Competition points deducted as a result of accumulating red cards during the regular Season.
  - iii. For every five (5) red cards received by a Team for any offence excluding R7, that Team shall lose one (1) Competition point.

#### 5.4. SUSPENSIONS

- 5.4.1 The Player must serve the suspension within that Division and remain suspended from all Competitions until the suspension is served
- 5.4.2 Suspensions incurred by Players (listed on that match card) in terms of Matches shall be served in consecutive fixtures of that Team after the date of suspension (this includes: regular Season, cup and final series fixtures).
- 5.4.3 Suspensions will carry over to a subsequent Season(s).
- 5.4.4 Where the Club does not field a Team in the same Competition as the suspension was incurred during the previous Season the Competition Administrator shall determine the Competition in which the Player is to serve the suspension.
- 5.4.5 A Player under suspension shall not be permitted to play in trial or friendly Matches without the written permission of the Competition Administrator, who may include any conditions deemed appropriate.
- 5.4.6 Suspensions cannot be served in friendly Matches, unless the suspension was incurred in a friendly Match in accordance with the Disciplinary Regulations.
- 5.4.7 The Competition Administrator may, upon receipt of a written request from the Player, temporarily lift their suspension for representative or other Matches

however, under no circumstances may a suspension be lifted for any Competition, cup or final series Matches conducted under the jurisdiction of the Federation.

5.4.8 Players or Team Officials who are under suspension are not permitted to enter the field of play, Player's race, change rooms, technical area or substitute bench at any time before or after the Match.

a) Players who are in breach of this Rule will be fined \$150 per offence.

b) The Player's Club who is in breach of this Rule will be fined \$250 per offence.

5.4.9 Players and Team Officials who are under suspension are permitted to attend playing venues but must comply with rule 5.4.8. Players and Club Officials who are under suspension can't relay instructions to their team.

5.4.10 Players or Team Officials who are under suspension may be allocated a place to sit or stand as directed by the Competition Administrator.

5.4.11 Players, Team or Officials who are under suspension shall be a minimum of 30 metres away in all directions of the field of play and the Team technical area.

5.4.12 All Players or Team Officials who are under suspension will be a minimum of 30 meters away in all directions of the field of play and the Team technical area.

a) Officials who are in breach of this Rule will be fined \$250 per offence. Continuous breaches will be referred to the Disciplinary Committee.

b) The Official's Club who is in breach of this Rule will be fined \$500 per offence. Continuous breaches will be referred to the Disciplinary Committee.

## 5.5. ASSAULTS ON MATCH OFFICIALS

5.5.1 In the event of an alleged charge of assault (verbal, physical, psychological) committed upon a Match Official the Match Official concerned and any witnesses to the offense should submit in writing to the Competition Administrator a report in full, detailing the incident in chronological order, including any conversations.

5.5.2 Such reports shall be lodged to the Competition Administrator by 5:00 pm of the

the second business day following the date of the Match or incident.

5.5.3 The Player shall be fined \$1500 for an assault on a match official, and the Club that the Player is associated with, shall be fined \$1000.

5.5.4 The player should confront the Disciplinary Committee and time will be arranged and notified to the player accordingly.

## **6. DISCIPLINARY COMMITTEE**

### **6.1 NATIONAL DISCIPLINARY REGULATIONS**

6.1.1 The FFA National Disciplinary Regulations apply to any infringement of the Laws of the Game by a Player or Official during a Match played under the auspices of the Federation.

6.1.2 These Rules supplements the National Disciplinary Regulations for all Competitions under the auspices of the Federation.

### **6.2. COMPOSITION OF DISCIPLINARY COMMITTEE**

6.2.1 The Federation shall appoint a Disciplinary Committee consisting of at least three (3) members.

6.2.2 The Disciplinary Committee should, wherever possible, consist of:

- a) An independent Chair with Legal qualification;
- b) a former senior Player;
- c) a former Referee.

6.2.3 The Disciplinary Committee will not consist of persons who are current Players, members or officials of Clubs participating in Federation Competitions.

6.2.4 Should the Chair of the Disciplinary Committee not be present the most senior member in continuous service shall act as Chair.

6.2.5 In the event of only two (2) members being available for a Disciplinary Committee hearing, subject to the consent of all parties, this shall constitute a quorum.



6.2.6 The Disciplinary Committee has jurisdiction to determine all grievances that arise under these Rules or matters referred to it by the Competition Administrator or Federation.

### 6.3. PROCESS FOR LODGING AN APPEAL

6.3.1 An appeal against an appealable decision made under these Rules shall be made on Club letterhead and lodged with the Competition Administrator by 5.00pm on the second business day following the receipt of the decision being appealed. 6.3.2 An appeal lodgement fee must accompany the appeal.

6.3.3 The lodgment of an appeal does not stay any penalty imposed under these Rules.

### 6.4. PROCEDURES OF THE DISCIPLINARY COMMITTEE

6.4.1 This Disciplinary Committee is to apply the FFA Grievance Resolution Regulations at the procedural application of its hearings.

6.4.2 The Disciplinary Committee may lay down its own rules of procedure in addition to those in the FFA Grievance Resolution Regulations, subject to the rules of procedural fairness and natural justice which it may vary as it sees fit from time to time and it shall not be subject to requirements of legal formality.

6.4.3 At a hearing by the Disciplinary Committee, the appellant's or the aggrieved party's case shall be presented first but nothing herein removes from any person the onus of proving any ground on which he relies.

6.4.4 Powers of the disciplinary committee

6.4.5 The Disciplinary Committee shall deal with all matters referred to it by the Competition Administrator.

6.4.6 The types of disciplinary sanctions are specified within the FFA Grievance Resolution Regulations.

6.4.7 The Disciplinary Committee may from time to time adjourn any hearing until

such times, dates and places and for such reasons, as it sees fit.

## 6.5 EVIDENCE

6.5.1 In any disciplinary proceedings the official reports of the Match Officials in respect of the incident or event that is the subject of the complaint/charge, are prima facie proof of the facts contained within the reports.

6.5.2 A Match Official will not be required to attend to give evidence unless:

(a) The person charged disputes the accuracy of the report and requests the attendance of the Match Official(s), and the Disciplinary Committee is of the opinion that the request is reasonable and made in good faith; or

(b) The Disciplinary Committee is of the opinion that it is reasonable, and necessary, to require the attendance of the Match Official(s).

6.5.3 It shall be an offence for any person giving evidence before any Disciplinary Committee to deliberately mislead the Disciplinary Committee and the penalty for such an offence shall be a fine of between \$500 and \$10,000 along with any other sanctions determined fair and reasonable by the Disciplinary Committee.

## 6.6. DECISION

6.6.1 The Disciplinary Committee shall base its determination on;

- a) The application of the Disciplinary Regulations and FFA Grievance Resolution Regulations;
- b) The evidence provided; and
- c) The scope of these Regulation.

6.6.2 The Disciplinary Committee shall advise the Competition Administrator of its determination within 48 hours of the determination being made. The Competition Administrator shall then advise the Club Delegate in writing within 48 hours of the determination being received.

6.6.3 Where no determination is advised to the Competition Administrator or where a

hearing has not been held within the timeframes specified, then the appeal shall be deemed to have been upheld in full.

6.6.4 The person to whom the determination refers shall not contact the Competition Administrator or the Federation. The responsibility of advising the person of the outcome of the hearing rests with their Club Delegate.

6.6.5 The appeal fee shall be forfeited in the event of the protest not being upheld in full.

6.6.6 If the appeal is upheld in full one hundred percent (100%) of the appeal fee shall be refunded to the appellant.

#### 6.7. APPEALS

6.7.1 All parties to a Disciplinary Committee hearing and the Competition Administrator shall have the right of appeal against a determination of the Disciplinary Committee.

Such appeals shall be made in accordance with the Federation's grievance process and FFA Statues.

## **7. CHARGES AND DISPUTE RESOLUTION**

For the purposes of these Rules, FFA has implemented a National Code of Conduct that seeks to promote and strengthen the reputation of Football in Australia by establishing a standard of performance, behaviour, and professionalism for its participants and stakeholders. In addition, it seeks to deter conduct that could impair public confidence in the honest and professional conduct of Matches or in the integrity and good character of its participants.

Spectator Conduct at Matches is subject to the FFA National Spectator Code of Behavior.

### **7.1. LODGING A COMPLAINT OR CHARGE**

- 7.1.1 Where any Team, Club, Player, Coach, Official or Match Official is charged with an offense, the charge shall be outlined in writing by the Competition Administrator, FFNT or FFA and contain the particulars of the alleged offense.
- 7.1.2 If a third party wishes to make a complaint under the Code of Conduct, that complaint must be made by a written report which must be delivered during normal business hours by fax, e-mail or hand delivered and confirmed by posted mail to the Competition Administrator. The report shall be lodged within seven (7) days of the date of the incident occurring to which the complaint or charge refers.
- 7.1.3 Charges or complaints laid by the Competition Administrator, Federation or FFA shall not be restricted to the time limits referred to in 7.1.

### **7.2. PROTEST MATCH RESULTS**

- 7.2.1 Protests regarding the incorrect recording of a Match result or the eligibility of a Player must be made in writing and lodged with the Competition Administrator by 5.00pm of the second business day following the conclusion of the Match.

7.2.2 All decisions of the Match referee are final and binding as far as the result of a The match is concerned and no protest can be lodged.

7.2.3 The Competition Administrator shall provide a copy of the protest to the Delegate of the opposing Club participating in the Match within forty-eight (48) hours of receiving the protest.

7.2.4 All protests regarding the incorrect recording of a Match result or the eligibility of a Player shall be lodged for review to the Competition Administrator.

### 7.3. MISTAKEN IDENTITY

7.3.1 If a Player claims the genuine mistaken identity, the Club may lodge an appeal to the Competition Administrator by 5.00pm of the second business day following the issue of the Disciplinary Infringement Notice.

7.3.2 The Competition Administrator will investigate the claim and decide as to whether to allow or dismiss the claim. The Competition Administrator may refer the matter to the Disciplinary Committee for determination at its entire discretion.

7.3.3 If the appeal is upheld, the Competition Administrator or Disciplinary Committee shall have the power to determine the identity of the true offender and shall impose such penalty upon that person as would have been imposed upon the appellant.

### 7.4. GRIEVANCE PROCEDURE

Each person agrees to submit exclusively to the Federation's and FFA's Statutes and Regulations, including, the Grievance Resolution Regulations and no person may institute or maintain proceedings in any court of law or tribunal (other than the limited right of appeal to the Court of Arbitration for Sport in accordance with the FFA Statutes).

### 7.5. AMENDMENT OF RULES

FFNT reserves the right to alter or amend rules from time to time if required.

## 8. FINANCE

### 8.1. REGISTRATION FEES

8.1.1 The Federation shall determine the annual schedule of fees and payment timetable prior to calling for nominations from Clubs.

8.1.2 There are four components that comprise the total Registration Fee paid by a Player to a Club to enable them to register to participate in a Federation Competition:

- a) FFA National Registration Fee as determined by FFA
- b) Federation Fee as determined by the Federation that includes insurance, development and administration fees;
- c) Competition Fee set by the Competition Administrator to cover administrative costs in conducting the Competition;
- d) Club levy set by each individual Club.

8.1.3 All levies must be documented within MyFootballClub (National Registration Database) and made available to all Players at the time of registration.

<b>FFNT Player Registration Fees for 2018</b>	
MiniRoos (age 5 to 11 years)	\$127.60 (includes FFA levy of \$12.60)
Juniors (ages 12 to 18 years)	\$177.60 (includes FFA if levy \$12.60)
Seniors – Division 1	\$220.00 (Includes FFA Levy of \$25.00)

Seniors – Premier Reserves	\$310.00 (includes FFA levy of \$25.00)
Seniors – Premier League	\$310.00 (includes FFA levy of \$25.00)
Note: as was the case in 2017, players will pay a \$5.00 entry fee into the stadium on match day	
<b>FFNT Referee Registration Fees for 2018</b>	
Referee registration fee	Does not apply

**SUMMARY TABLE – REGISTRATION FEES 2018**

8.2. MATCH FEES

- 8.2.1 Where applicable, Clubs will be invoiced monthly for costs associated with a Match including:
- a) Match Officials payments;
  - b. Ground hire
  - c) Line marking
  - d) Security;
  - e) Other costs associated with staging the Match.

8.3. PAYMENT OF INVOICES

- 8.3.1 All fees, levies, ground hire charges or fines are payable by the due date for payment as stated on the invoice.
- 8.3.2 For the avoidance of doubt, debts shall include monies owed to the Federation or

other Clubs. A Club may challenge individual fees included in an invoice however payment of the unchallenged components of the invoice is required to be made by the due date for payment, as stated on the invoice.

#### 8.4. SANCTIONS

- 8.4.1 In the event that a Club fails to make payment by the due date the following sanctions will be imposed:
- a) Where the Club has, a debt outstanding more than thirty (30) days it may be charged a late payment fee of 10% of the outstanding balance.
  - b) Where the Club has, a debt outstanding more than thirty-five (35) days one (1) Competition point may be deducted against the Team for which the invoice was levied;
  - c) The Team against which the invoice was levied shall be suspended from all Competitions until such time as the full amount is paid; and
  - d) The Team shall pay a bond of two hundred dollars (\$200) prior to their Competition suspension being withdrawn.
- 8.4.2 Should the Competition Administrator not be satisfied with the given reason for non-payment of an outstanding debt payment may be pursued through a debt collection service.
- 8.4.3 All outstanding debts must be paid in full before nominations will be accepted for a new Season.

#### 8.5. FINES

- 8.5.1 At its absolute discretion the Competition Administrator or Federation may waive or reduce Club's fines and penalties.

#### 8.6. GATE REVENUE

- 8.6.1 All monies derived from entrance fees to Federation Matches shall remain the property of the federation.



## 8.7. RECORD MAINTENANCE

8.7.1 All Clubs that participate in Matches sanctioned by the Federation shall maintain financial records in accordance with the Associations Act (Northern Territory).

## 8.8. BONDS

8.8.1 The Federation may implement and determine a bond prior to the commencement of a Competition. Bond monies are held in trust for a period determined by the Competition Administrator.

8.8.2 Clubs may be asked to lodge a bond for each senior men's and women's Team at the time of the acceptance of their nomination into a Competition.

8.8.3 Outstanding debts may be deducted from any bond monies if implemented.

8.8.4 Where a Club requires their bond monies to be refunded at the conclusion of the playing Season:

- a) the request must be made in writing at least fourteen (14) days prior to the end of the Competition;
- b) Outstanding debts shall be deducted from the bond monies prior to any refund being made;

8.8.5 Clubs shall lose bond monies in the following circumstances:

- a) Withdraws a Team(s) from the Competition;
- b) Club official(s), Player(s) or supporters are found guilty of bringing the game into disrepute or for violent conduct.

## 9. INTERPRETATIONS AND DEFINITIONS

### 9.1. INTERPRETATIONS

In these Rules, unless a different intention shall appear:

- a) word importing the singular number only shall include the plural number and vice versa;
- b) words importing the masculine gender only shall include the feminine gender;
- c) words denoting persons include incorporated and unincorporated Teams and Clubs; and
- d) words or expressions shall be interpreted in accordance with the provisions of the Interpretation Act and that Act as in force on the date on which these Rules are adopted by the Federation.

9.1.1 References to persons include their respective executors, administrators, personal representatives, and successors in title (as the case may be).

9.1.2 Expressions referring to writing are construed as including references to printing, lithography, photography, and other modes of representing or reproducing words in a visible form.

## APPENDIX A – TABLE OF OFFENCES

### RECOMMENDED SANCTIONS FOR SERIOUS INFRINGEMENTS

(In accordance with the FFA National Disciplinary Regulations & Table of Offences for Players)

Offence No.	Offence	Minimum Sanction
1 (R4 or R5 for Players)	Denying the opposing team, a clear goal-scoring opportunity	The Mandatory Match Suspension
2 (R6 for Players)	Use of offensive, insulting or abusive language and/or gestures	The Mandatory Match Suspension

3 (R1 for Players)	Serious Foul Play (e.g. when challenging for the ball)	1 additional match plus the Mandatory Match Suspension
4 (R2 for Players)	Assault on a Player (e.g. violent conduct when not challenging for the ball)	1 additional match plus the Mandatory Match Suspension
5 (R6 for Players)	Serious Unsporting Conduct	1 additional match plus the Mandatory Match Suspension
6 (R6 for Players)	Use of discriminatory language and/or gestures, including racist, religious, ethnic or sexist	4 additional matches plus the Mandatory Match Suspension
7 (R3 for Players)	Spitting at a player	5 additional matches plus the Mandatory Match Suspension
8 (R2 or R6 for Players)	Inciting a brawl	5 additional matches plus the Mandatory Match Suspension
<b>Specific Offences Against a Match Official</b>		
9 (R6 for Players)	Use of offensive, insulting or abusive language and/or gestures against a match official	The Mandatory Match Suspension
10 (R6 for Players)	Unsporting conduct toward a match official	3 additional matches plus the Mandatory Match Suspension
11 (R2 for Players)	Assault of a match official	6 months including the Mandatory Match Suspension
12 (R3 for Players)	Spitting at a match official	12 months Including the Mandatory Match Suspension

This Appendix provides Competition-specific information for use by Clubs, Teams and Team Officials. This Appendix is a formal part of the Competition Rules and as such breaches may incur sanctions in accordance with the Competition Rules.

## APPENDIX B - COMPETITIONS FINES

ITEMS	DETAILS	REGULATIONS	FEES
1.	Double Registration	2.7.3	\$500
2.	Nomination after team-nomination cut-off date	3.1.2	\$150
3.	De-registration	3.3.4.1	\$200
4.	Team Withdrawal	3.7.3 (c)	\$1000
5.	Failure to play an eligible player	4.2.8	\$250
6	Technical Area Breach	4.13.2	\$250
7	Failure to Play Match	4.6.2	\$300
8	Failure to Lodge a Completed Team Sheet	4.8.1	\$200
9	Failure to provide Approved Match Ball	4.10	\$100

10	Yellow Card (Cautions)	5.2.1	\$100
----	------------------------	-------	-------

11	Red Card (Expulsion)	5.3	\$150
----	----------------------	-----	-------

11	Give false or misleading information	6.5.3	Up to \$10,000
----	--------------------------------------	-------	----------------

12	Assault on Match Officials	5.5.3	\$1000 - \$1500
----	----------------------------	-------	-----------------