



Competition Regulation

Season 2020 – Senior Football

(Revised January 2020)

Football NT Inc 2020

ADDRESS: 131 ABALA ROAD MARRARA | PHONE: 08 8928 1006

Table of Content

DEFINITIONS	1
1 INTRODUCTION.....	4
1.1 PURPOSE.....	4
1.2 INTERPRETATIONS	4
1.3 COMPETITION MANAGEMENT	4
1.4 IMPOSITION OF SANCTIONS	4
1.5 BROADCAST MATCHES – COPYRIGHT.....	4
2 REGISTRATION OF PARTICIPANTS AND CLUBS	5
2.1 CODE OF CONDUCT	5
2.2 PLAYERS	5
2.3 CLUB, CLUB OFFICIALS AND TEAM OFFICIALS	6
2.4 MATCH OFFICIALS	7
2.5 REGISTRATION PERIODS	7
2.6 REGISTRATION DEADLINE.....	8
2.7 PRIORITY OF REGISTRATION	8
2.8 FNT MID-SEASON PLAYER REGISTRATION	9
2.9 CHANGES TO REGISTERED INFORMATION	10
2.10 INTERNATIONAL TRANSFER CERTIFICATE	10
2.11 DEREGISTRATION	11
3 COMPETITION STRUCTURE	12
3.1 COMPETITIONS STRUCTURE AND NOMINATIONS	12
3.2 REPRESENTATIVE, INSTITUTE AND NATIONAL TRAINING CENTRE (NTC)	12
3.3 SENIOR COMPETITION	13
3.4 ALTERATIONS TO DRAWS	14
3.5 POSTPONED MATCHES	15
3.6 TEAMS WITHDRAWING OR EXPELLED FROM COMPETITION	15
3.7 MATCH POINTS	16
3.8 FINALS SERIES.....	16
3.9 EXTRA TIME	18

3.10	VENUES AND ADMISSION CHARGES	18
4	MATCH DAY	20
4.1	COACH ELIGIBILITY	20
4.2	PLAYER ELIGIBILITY	20
4.3	DETERMINATION OF MATCHES PLAYED.....	21
4.4	NUMBER OF PLAYERS	21
4.5	DURATION OF MATCHES.....	22
4.6	FAILURE TO PLAY A MATCH	22
4.7	ABANDONED MATCHES	22
4.8	TEAM SHEETS	23
4.9	MATCH SHIRTS	24
4.10	MATCH BALLS.....	25
4.11	MATCH OFFICIALS	25
4.12	FORFEITS.....	26
4.13	TECHNICAL AREA	27
4.14	INTERCHANGE AND SUBSTITUTIONS	27
4.15	MATCH REPORTS.....	28
4.16	GROUNDS	28
5	DISCIPLINE	30
5.1	FFA NATIONAL DISCIPLINARY REGULATIONS	30
5.2	YELLOW CARDS (CAUTIONS)	30
5.3	RED CARDS (EXPULSION)	31
5.4	SUSPENSIONS	33
5.5	ASSAULTS ON MATCH OFFICIALS	34
6	DISCIPLINARY COMMITTEE	35
6.1	NATIONAL DISCIPLINARY REGULATIONS and FFA CODE OF CONDUCT.....	35
6.2	COMPOSITION OF DISCIPLINARY COMMITTEE	35
6.3	PROCESS FOR LODGING AN APPEAL	36
6.4	PROCEDURES OF THE DISCIPLINARY COMMITTEE	36
6.5	EVIDENCE	36

6.6	DECISION.....	37
6.7	APPEALS	37
7	CHARGES AND DISPUTE RESOLUTION	38
7.1	LODGING A COMPLAINT OR CHARGE.....	38
7.2	PROTEST MATCH RESULTS	38
7.3	MISTAKEN IDENTITY	39
7.4	GRIEVANCE PROCEDURE	39
7.5	AMMANDMENT OF RULES.....	39
8	FINANCE.....	40
8.1	REGISTRATION FEES	40
8.2	MATCH FEES	41
8.3	PAYMENT OF INVOICES	41
8.4	8.4. SANCTIONS	41
8.5	FINES	41
8.6	GATE REVENUE.....	41
8.7	RECORD MAINTENANCW	42
8.8	BONDS	42
9	INTERPRETATIONS AND DEFINITIONS.....	43
9.1	INTERPRETATIONS	43
	APPENDIX A – TABLE OF OFFENCES	44
A.A.	OFFENCES BY PLAYERS+	44
A.B.	OFFENCES BY PARTICIPANTS AGAINST MATCH OFFICIALS.....	45
A.C.	OTHER OFFENCES BY MEMBER #^	46
	APPENDIX B - COMPETITIONS FINES	50

DEFINITIONS

Amateur means any Player who is not a Professional as defined in the National Registration Regulations.

Away Team means the Team that is the second named on the draw.

Board means the body made up of elected Directors of the Federation.

Club means any Club registered with FFA in accordance with the National Registration Regulations from time to time. A reference to Club includes a Club admitted by a Competition Administrator to field a Team in a Competition.

Club Official means any person involved with the administration, management or organisation of a Club (whether paid or unpaid), including employees, contractors, consultants, officers and directors, and representatives.

Code of Conduct means the national football code of conduct as promulgated by FFA from time to time (a current version of which can be obtained on www.footballaustralia.com.au or on request).

Competition means any Competition or tournament registered with FFA in accordance with the National Registration Regulations for Football NT, including the pre- Season, Season proper, finals series and any post Season tournament or knockout cup Competition. For clarity, the Men's Premier League is a competition, the Men's Premier League Reserves is a separate competition, as is Division 1. This also applies to the Women's Premier and Premier Reserves Leagues.

Competition Administrator means the entity responsible for the conduct and staging of a Competition.

Competition Regulations means the regulations governing the administration and conduct of a Competition under the auspices of Football NT (FNT).

Delegate means the representative nominated by a Club to represent that Club at meetings and to be authorized to deal with the Competition Administrator or Football NT regarding Club issues.

Disciplinary Committee means the FFNT Disciplinary Committee constituted in accordance with the Grievance Resolution Regulations that has jurisdiction over the Competition.

Disciplinary Regulations means the national football disciplinary regulations as promulgated by FFA from time to time (a current version of which can be obtained on www.footballaustralia.com.au or on request).

Football NT or FNT means Football Northern Territory Incorporated.

FFA Statutes means FFA's statutes and regulations as promulgated by FFA from time to time, including its constitution and by-laws and rules, and policies and procedures.

FIFA or Federation Internationale de Football Association means the world governing body of Football.

FFA or **Football Federation Australia** means the governing body of Football in Australia.

FIFA Statutes mean the statutes and accompanying standing orders and regulations promulgated by FIFA from time to time, including the Regulations on the Status and Transfer of Players, Code of Ethics, Disciplinary Code, Players' Agents Rules and Regulations Governing Match Agents.

Grievance Resolution Regulations means the regulations promulgated by FFA from time to time setting out the procedures applying to grievances and disputes in football (which can be obtained on www.footballaustralia.com.au or on request).

Home Team means the Team that is the first named on the draw.

Institute means any national, state or territory institute or academy of the sport that has a football program including any national training center implemented by either FFA or a Member Federation.

Junior means Matches or Competitions including Small Sided Football and up to but not including Youth.

Laws of the Game means the laws governing or regulating the playing of Football as determined by FIFA, FFA, FNT and local rules as adopted from time to time.

A match means any Match staged, participated in, sanctioned by or played under the auspices of FFA, a Member Federation or a Competition Administrator.

Match Official means a Referee, assistant referee, fourth official, Match commissioner, referee inspector, selector, any person in charge of safety or any other person appointed by FFA, a Member Federation or a Competition Administrator to assume responsibility in connection with a Match.

PlayFootball means the national registration system provided by Football Federation Australia.

Professional means a Player who is paid to play football as defined in the National Registration Regulations.

Office of Football NT means the postal address of the Federation being GPO Box 3105 Darwin NT 0801. **Officer of Football NT** means any Board Member or employee of Football NT.

Official means any Club Official and/ or Team Official.

Player means any person who is, from time to time, registered to a Club whether that person is male or female, junior or senior or an Amateur or Professional.

Professional means a Player who is paid to play football, as defined in the National Registration Regulations.

Professional Player Contract means the mandatory form of contract for the casual employment of a Professional as specified in the National Registration Regulations.

Premier League means the top tier of Men's football in the Northern Territory.

Registrar means a person appointed by a Club as their representative for all matters relating to Player registrations.

Referee means a Referee duly appointed to officiate at a Match.

Registration Period means the period in which a Player must be registered with a Club as specified in these Rules.

Regular Season means the Matches played between the Clubs during the Season to determine the Clubs that compete in the Finals Series and includes all Matches played in the Season that is not in the Pre-Season, Cup Competitions or the Finals Series.

Representative Team means a Team representing a State or Territory, a region, or an Institute that participates in a Competition.

Ring In means a Player who plays under the name of another registered Player's name or a false name.

Rules mean Competition Rules.

Season means the period starting with the first Match of a Competition and ending on the last Match of that Competition.

Senior means Matches or Competitions for open-aged males or females and Youth Competitions.

Team means a squad of Players from a single Club competing in an authorised Football NT Competition.

Team Sheet refers to Team Sheets or Match Cards.

Team Official means any personnel involved with the management, preparation or participation of a Club's Team (whether paid or unpaid), including the coaches, managers, medical staff (including Team or Match day doctor), physiotherapists, gear persons and other support staff.

Weekday Fixture means a Match scheduled to be played on a day other than those defined as a Weekend Fixture.

Weekend Fixture means a Match scheduled to be played on a Friday, Saturday or Sunday and on a Monday where that day is classified as a public holiday

1 INTRODUCTION

1.1 PURPOSE

The purpose of these Rules is to assist in the administration of Competitions under the control of Football Northern Territory (**FNT**).

1.2 INTERPRETATIONS

Football NT and Competition Administrator shall be always empowered to interpret these Regulations to make such rulings as are deemed appropriate in the circumstances. Such rulings are to be documented and are subject to the appeal processes provided for within these Regulations.

1.3 COMPETITION MANAGEMENT

1.3.1 Football Northern Territory is the Competition Administrator who will be responsible for the management of all Competitions.

1.3.2 The Competition Administrator will always ensure its objectives are consistent with the objectives of Football Northern Territory.

1.3.3 The Competition Administrator shall deal with Clubs, Officials and /or Players in respect of offenses and/or complaints and with any matter not otherwise specifically provided for in these Regulations, including Clubs being held to account for the actions of its Officials, Players and/or supporters. After an inquiry if the Competition Administrator deems a Club has committed a breach of the provisions of these Regulations or conducted itself in a matter prejudicial to the interests of football, they may refer the matter to the Disciplinary Committee.

1.4 IMPOSITION OF SANCTIONS

Football NT and Competition Administrator are empowered to impose sanctions in accordance with these Regulations and Part V of the FFA Statutes. The sanction may be, but not limited to, a reprimand, fine, loss of points or expulsion from a Competition. Clubs, Officials or Players shall be entitled to appeal against a sanction pursuant to these Regulations and FFA's Grievance Resolution Regulations.

1.5 BROADCAST MATCHES – COPYRIGHT

The copyright for all Matches under the jurisdiction of Football NT shall remain with the Football NT. No such Match shall be telecast via live streaming or broadcast without the prior written consent of the Football NT.

2 REGISTRATION OF PARTICIPANTS AND CLUBS

2.1 CODE OF CONDUCT

2.1.1 All Players and Club Officials are bound by and must comply with all FFA Statutes and Regulations, including without limitation the FFA Code of Conduct.

2.1.2 The FFA Code of Conduct aims to promote and strengthen the reputation of football in Australia by establishing a standard of performance, behaviour and professionalism for its Members (as defined in the Code of Conduct) and stakeholders. In addition, it seeks to deter conduct that could impair public confidence in the honest and professional conduct of matches or in the integrity and good character of its members.

2.2 PLAYERS

2.2.1 Players who are registered participants in Football Northern Territory Competitions will be either Professional or Amateur Players as prescribed in the National Registration Regulations (NRR).

2.2.2 As per the FFA National Registration Regulations:

- i. A Player participating in football is either an Amateur or a Professional;
- ii. A Professional is a Player who has a written contract with a Club (NRR05), under which he or she is paid to play football for that Club;
- iii. An Amateur is any player that is not a Professional. A Club may pay or reimburse an Amateur Player any expenses incurred by that Player without affecting the Player's Amateur status, including for travel, kit, equipment, or insurance premiums. If however, an Amateur is reimbursed more than \$110 a week by a Club, the onus is on that Club to satisfy Football Northern Territory that the amount paid accurately reflects the expenses incurred by that Player. If the Club fails to satisfy this onus, that player will be deemed to be a Professional Player;
- iv. A Player may only be registered with one (1) Club in each form of the game at any time in line with the FFA National Registration Regulations and FIFA. Northern Territory has discretion to permit players to play in multiple clubs that do not compete in the same competition (ie. Invited Players);
- v. A Player may also be registered as a Futsal/Social Player without affecting a Player's registration with other football types;
- vi. A Player may be registered for a maximum of three (3) Clubs in each form of the game during a Season. During this period, the Player is only eligible to play in Matches (other than friendly and trial matches) for two (2) Clubs in each form of the game.

2.2.3 All Players must be registered in accordance with the FFA National Registration Regulations.

2.2.4 For a registration to be deemed valid the Club Registrar must set the Player's status as being "Active".

2.3 CLUB, CLUB OFFICIALS AND TEAM OFFICIALS

2.3.1 All Club Officials and Team Officials **must** be registered within *PlayFootball*.

2.3.2 Each Club must be registered with FFA in accordance with the FFA National Registration Regulations:

- a) By completing the Prescribed Form *NRR 02 – Application for Registration of Football Club* located at www.footballaustralia.com.au. Tab on About FFA then tabs on Statutes and Regulations.
- b) For a newly formed Club, completing and lodging this form to the Federation prior to the commencement of their inaugural Season in accordance with the rule 2.3.3
- c) Club names must be approved by Football NT, after being reviewed in accordance with FFA directives.
- d) Every Club shall participate in the FFA NCAP accreditation process during 2020;

2.3.3 A Club must apply to the Competition Administrator for approval to enter Competition under the jurisdiction of the Federation.

2.3.4 Clubs who wish to nominate for:

- a) **Premier League** - shall apply for entry according to these regulations and entry may or may not be granted at the discretion of the Competition Administrator.
- b) Division 1 League – shall apply for entry according to these regulations and entry may or may not be granted at the discretion of the competition administrator.

2.3.5 The Federation may require a Club to lodge a bond to compete in Competitions. Any such bond is required to be paid prior to any Team representing that Club participating in any Competition including pre-Season and/or friendly Matches.

2.3.6 All Coaches and Team Manager's must be registered in order to be involved with a Club participating in Northern Territory Competitions.

2.3.7 An application for registration as a Coach or Team Manager by a Club shall be made by completing the following requirements:

- a) Registration on the Play Football system;
- b) Working with Children Clearance in accordance with NT Police SAFE NT.

2.3.8 The registration can be affected and made active in the Play Football system, once the Club has sighted the applicant's working with children clearance, also called an Ochre Card.

2.3.9 All coaches that coach within Northern Territory Competitions must hold the recognised minimum level of coaching accreditation required as stipulated in the Licensing Criteria.

2.3.10 Failure to comply will result in non-issue of Accreditation.

2.4 MATCH OFFICIALS

2.4.1 All match Officials **must** be registered within *PlayFootball*.

2.4.2 All Match officials must be registered in order to be involved with refereeing in Northern Territory Competitions.

2.4.3 An application for registration as a referee by an individual shall be made by completing the following requirements:

- a) Registration on the Play Football system;
- b) Working with Children Clearance in accordance with NT Police SAFE NT.

2.4.4 The registration can be affected and made active in the Play Football system, once the FNT's Referee Manager has sighted the applicant's working with children clearance, also called an Ochre Card.

2.4.5 All match officials that are within Northern Territory Competitions must hold the recognised minimum level of accreditation required as stipulated.

2.4.6 Failure to comply will result in non-issue of Accreditation or appointments.

2.5 REGISTRATION PERIODS

2.5.1 Senior Amateur Players can only be registered between 1 January to 30 July of the competition year.

2.5.2 Junior Amateur Players can only be registered between 1 January and the last day of the regular Season.

2.5.3 A Professional Player can only be registered from 8th of January to 5th of February.

2.5.4 All Amateur Players must be registered via the Play Football system. The registration of an Amateur Player with a Club is effective from the date the individual is made active by the Club within the system, unless they also require an International Transfer Certificate.

2.5.5 If a Player is registering for the first time, that Player must provide the Club with evidence of name and age, by producing an original birth certificate, passport, drivers licence or similar form of identification.

2.5.6 Unless cancelled earlier, an Amateur registration is effective from the date of being made active in The Play Football System until the end of the Competitions in which the player is registered.

2.5.7 A Club that wishes to register an Amateur Player outside of the designated Registration Period must lodge a written request to the Competition Administrator for prior approval. The Competition Administrator's decision shall be final and non-appealable.

2.6 REGISTRATION DEADLINE

A Player's registration must be made active by the Club via *PlayFootball* at least two (2) working days before that Player to be eligible to play in the next round of scheduled Matches.

2.7 PRIORITY OF REGISTRATION

2.7.1 A Player can only be registered with one Club at a time in accordance with the FFA National Registration Regulations.

2.7.2 If a Player registers with more than one Club priority of registration shall be accorded to the Club that first registered the Player in accordance with the FFA National Registration Regulations.

2.7.3 A Club that knowingly induces a Player to sign an FFA registration form in the knowledge that the Player has already registered with another Club shall be fined \$500 per offense

2.7.4 Football NT, at its discretion, may sanction a Player that is registered for more than one Club at any given time during the Season.

2.8 FNT MID-SEASON PLAYER REGISTRATION

For all player mid-season registrations, the following guidelines must be followed by all clubs:

If an Amateur no longer wishes to play for his or her Club, he or she may allow the registration to lapse.

2.8.1 Player

If the Amateur wishes to change Clubs during a Season, the Amateur must either:

- a) complete and sign the Notification of Cancellation of Amateur Registration (Prescribed Form 08) and send a copy to the Club and the Competition Administrator; or
- b) apply to de-register via the National Online Registration System, which will notify the Club and the Competition Administrator of the Player's intention to change Clubs.
- c) From 2020, a player may only change clubs after the completion of one full round. One full round is concluded after each team in the competition have played each other once in consecutive rounds.

2.8.2 Club

If a Club no longer wishes an Amateur to play for the Club, that Club must either

- a) complete the Notification of Cancellation of Amateur Registration (Prescribed Form 08) and send a copy to that Amateur and the Competition Administrator; or
- b) apply to de-register the Player via the National Online Registration System, which will notify the Player and the Competition Administrator of the Club's intention to de-register the Player.

2.8.3 Process

The de-registration of an Amateur from a Club is effective:

- a) immediately when the other party (i.e. Club or Player as the case may be) has confirmed the notification of cancellation; or
- b) seven (7) days from the date the Player requested the de-registration in accordance with article 9.2(b) or (c) in National registration Guidelines (as the case may be) unless a Grievance has been initiated with the Competition Administrator in accordance with article 16.2 of these Regulations within 48 hours from when the club receives an email from the national online registration system advising de-registration.

2.8.4 Football NT

No re-registration will be possible without Football NT being advised and a clearance has been issued by Football NT prior to approving the player in PlayFootball registration system.

2.8.5 New Club

The registration of an Amateur with a new Club is effective from the date the Player is registered in the National Online Registration System and such registration has been accepted by the Club after checking with Football NT's competition administrator.

2.9 CHANGES TO REGISTERED INFORMATION

If any changes occur in the information registered for your Club's Players, Coaching and Support Staff, the Club is required to ensure the relevant person whom the information relates shall update their information in the Play Football system no later than 72 hours of the change occurring.

2.10 INTERNATIONAL TRANSFER CERTIFICATE

2.10.1 In accordance with FIFA Statutes, a Player who was last registered (current or otherwise) with an overseas Club, inclusive of Players who are permanent residents or Citizens of Australia, require an International Transfer Certificate (ITC) from the National Association of that overseas Club in order to be registered in Australia.

2.10.2 An ITC is an official document, physical or electronic, issued by a National Football Association, bearing its logo and physically signed by an authorised officer of that National Body. It can only be received by a Club via Football Federation Australia or Football Northern Territory.

2.10.3 In accordance with FIFA Statutes, Football Federation Australia is only able to request an ITC from another National Association during the Registration Periods for Football Federation Australia, as specified in FIFA TMS (Transfer Management System).

2.10.4 In accordance with the National Registration Regulations 4.5(d), a player is cannot be registered unless and until the ITC document is received by FFA and FNT.

2.10.5 Regardless of whether the player is made 'active' in the Play Football system or not, a player requiring an ITC is not eligible to play any Competition Fixtures for any Club until the ITC document has been received by the Club.

2.10.6 It is the Clubs responsibility to ensure an ITC document has been received prior to fielding the Player in a match. Clubs failing to satisfy these criteria will be deemed to have played an ineligible player and will be dealt with accordingly under these Competition Regulations.

2.10.7 On fulfillment of all requirements, the Player can be added to the club's Player Roster.

2.10.8 To access the full 'Guide to International Transfer Certificates' document, visit www.ffa.com.au

2.11 DEREGISTRATION

2.11.1 Every Team shall have a maximum of 5 intra-club player de registrations allotted per team. After the maximum de registrations, a \$200 administration fee shall be applied per player deregistration.

2.11.2 This administration fee may be waived by the Competition Administrator under extenuating circumstances. Examples of extenuating circumstances include but are not limited to, long term player injuries and intrastate, interstate or international player movement.

2.11.3 The Competition Administrator shall review submissions from Clubs claiming extenuating circumstances on a case by case basis.

2.11.4 All Club submissions should be made in writing to the Competition Administrator, who will respond to the Club within ten (10) working days of receipt of finalised documentation from the Club. All mid-season player de-registration must follow 2.8. FNT Mid-Season Player Registration.

2.11.5 The Competition Administrator's ruling on extenuating circumstances shall be binding and non-appealable.

3 COMPETITION STRUCTURE

3.1 COMPETITIONS STRUCTURE AND NOMINATIONS

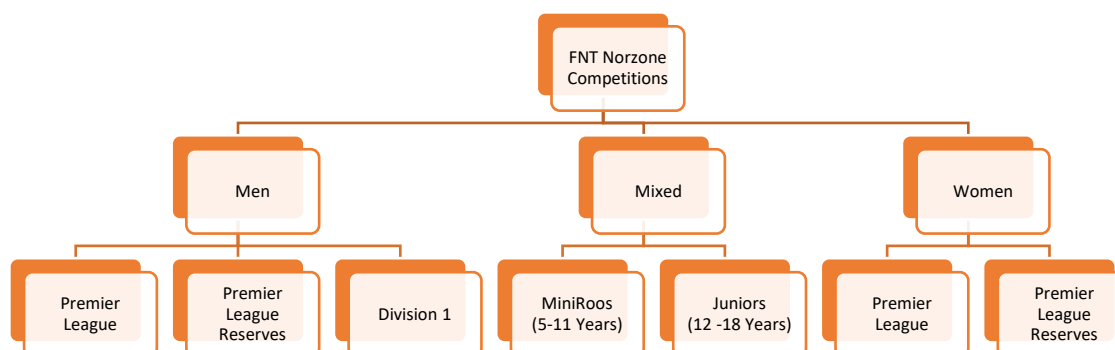


Figure: FNT Norzone Competition Structure

3.1.1 Football NT will conduct Competitions for Seniors in consultation with the Clubs participating in the Competitions and based on the annual Team registrations for the relevant Competition Season.

3.1.2 Clubs are required to nominate Teams to be included into Competitions. Clubs must submit their nominations to the Competition Administrator by 21st of February 2020. Any requests to change after 21st of February shall be considered. A Club that makes a second change shall be issued a \$200.00 administration levy.

3.1.3 All matches shall be played in accordance with the Laws of the Game as decided by the International Football Association Board and distributed by FFA. This is in conjunction with the Competition Regulations of FNT.

3.2 REPRESENTATIVE, INSTITUTE AND NATIONAL TRAINING CENTRE (NTC)

3.2.1 Institute and NTC Teams may apply to participate in a Competition. The Competition Administrator and the Federation shall allocate these Teams to the most appropriate Competition. NTC Teams in the Junior or Senior Competitions will play for points and at the discretion of the Competition Administrator, may be eligible for their respective Final Series.

3.2.2 In the event of a Team having three (3) or more Players selected into a Representative Team, it shall have the right to apply to the Competition Administrator for deferment of a Match that is affected, or likely to be affected, by the selection of those Representative Players. Such requests are not subject to the minimum timeframes specified within Rule 3.4.

3.2.3 Decisions of the Competition Administrator under Rule 3.2 shall be binding and are non-appealable.

3.3 SENIOR COMPETITION

3.3.1 Premier League

- a) The Premier League competition shall be capped at eight (8) Teams.
- b) No Club shall have any more than one Team participating within this competition.
- c) Football NT may reject the application of any Club to participate in the Premier League. The Competition Administrator's decision shall be final and not appealable.
- d) Following rules apply to Premier League competition:
 - i From 2020 the Top players in Premier League competition are not permitted to play down in Reserves. This rule will apply in both Men's and Women's Premier League. For Men's Premier League, after ten (10) rounds clubs pick their top eight (8) players and provide this list to FNT for validation and verification by FNT's Technical Director. For Women's Premier League, after three (3) rounds clubs pick their top six (6) players and provide this list to FNT for validation and verification by FNT's Technical Director. These top players can only play for Premier League. If any of those top player(s) has a long-term injury, then Clubs must nominate a replacement for assessment by the FNT Technical Director.
 - ii Note: Each nominated PL team must have a minimum 18 registered PL players and a list of all 18 players MUST be submitted to FNT before the start of the season and may be edited as required. No MPL player (see 3.3.3.a) can play in Division 1.
- e) An accredited Sports Trainer shall be registered for every team participating in the Men's and Women's Premier League competition and a First Aid Certified person shall be registered for all Men's and Women's Premier Reserves League Teams. The Sports Trainer shall not be a player recorded on the playing team sheet. Teams found to be in breach of this rule shall have from 2020 1 competition point deducted per offense. The accredited sports trainer should be registered on PlayFootball; only registered sports trainers shall be allowed in the competition areas.

3.3.2 Premier League Reserves

- a) This is the reserve grade for Premier League.

- b) The Premier League Reserves competition shall be capped at eight (8) teams.
- c) All Reserves players can play down but from round 1, five (5) players must be nominated each week and those players are the ones that can play down that weekend. Each player can play down a maximum of 5 times.
Note: all reserve players may play up as many times as the coaches require from round 1.
- d) Players registered into the Premier League Reserves competition, shall be permitted to play in the Premier League and Division 1 competitions.

3.3.3 Division One League

- e) Players registered in Premier League Men are not eligible to play in Division One competition except for the MPL Goalkeeper who may play outfield after seeking permission from Competition Administrator.
- f) "5 for 5 rules" will apply. 5 Division One players are nominated after 3 rounds as the players that can play up on 5 occasions for 25 opportunities for the MPL and MPLR coaches to utilize. These core 5 are the clubs best 5 Division One players. FFNT Technical Director will validate and verify these players. If a 5 for 5 player has a long-term injury, then the Clubs must nominate a replacement for review. Please refer to clause 2.11 Deregistration for intra-Club player movements.
- g) One team club can apply to enter the Division One League in accordance with Regulation 2.3.4 (b)
- h) The maximum number of teams in this competition shall be at the discretion of the Competition Administrator/Federation.

3.4 ALTERATIONS TO DRAWS

3.4.1 Once fixtures have been published; no changes may be made unless otherwise provided for in these rules. A club may request a fixture change if it can demonstrate exceptional circumstances, in writing, not less than four weeks prior to the scheduled kick-off date. This request may or may not be approved by FNT in its discretion.

3.4.2 Any request for a fixture change must be accompanied by written consent from the opposition club.

3.4.3 A club, which has been granted a fixture change, is responsible for all costs associated with the rearranged fixture. Failure to comply with may result in the request being rejected outright without further consideration.

3.4.4 The Competition Administrator shall determine the date, time and venue for any re-scheduled match to be played. The Club that requested the re-scheduling of Match shall meet all costs incurred because of the re-scheduling of Match.

3.4.5 All rescheduled Matches must be played prior to the last Competition round of the Regular season.

3.4.6 Decisions of the Competition Administrator under Rule 3.4 are final and shall be binding and not appealable.

3.5 POSTPONED MATCHES

3.5.1 In the event of a Match not being played due to weather or other causes over which neither Team has any control, or in the event of a Match that is ordered to be replayed, the Match shall be played as determined by the Competition Administrator.

3.5.2 All postponed Matches shall be played prior to the last Competition round of the Regular Season.

3.5.3 Decisions of the Competition Administrator under Rule 3.6 shall be binding and not appealable.

3.6 TEAMS WITHDRAWING OR EXPELLED FROM COMPETITION

3.6.1 For the purpose of this Rule the term "removed" shall include a Team that has withdrawn or been expelled from a Competition.

3.6.2 If a Team is removed from a Competition on or before the point of the Season at which all Teams have played each other once all points along with goals scored (for & against) that Team will be erased. Any Player votes gained in Matches involving the removed Team will be erased.

3.6.3 If a Team is removed after the point of the Season at which all Teams have played each other once, then:

- a) All points along with goals scored (for & against) that Team before the point of the Season at which all Teams have played each other once will remain.
- b) Every point along with goals scored (for & against) that Team after the point of the Season at which all Teams have played each other once will be erased.

- c) Withdrawing a Team, a Club shall incur a \$1000 fine for withdrawing a Team for an on-going competition

3.6.4 Decisions of the Competition Administrator under Rule 3.4 are final and shall be binding and not appealable.

3.7 MATCH POINTS

3.7.1 In all Competition fixtures where points are accrued Match points will be awarded as follows:

RESULT	POINTS
WIN	3 POINTS
DRAW	1 POINTS
LOSS	0 POINTS
BYE	0 POINTS
NO RESULT	0 POINTS

3.7.2 The Competition Administrator reserves the right to record any fixture as a "No Result".

3.7.3 The Team with the greatest number of points at the end of the Competition shall be declared as competition "Premiers".

3.7.4 If two (2) or more Teams are levels on points at the end of the Regular Season the following criteria shall be applied, in order, until one of the Teams can be determined as the higher ranked:

- a) highest goal difference;
- b) lowest number of red cards accumulated
- c) lowest number of yellow cards accumulated
- d) highest number of goals scored
- e) highest number of points accumulated in matches between the Teams concerned
- f) highest goal difference in matches between the Teams concerned
- g) highest number of goals scored in matches between the teams concerned
- h) toss of coin

3.8 FINALS SERIES

3.8.1 To be eligible to play for a Team in the final series the rules from in-season continue to apply. Following additional rules apply for each competition during final series in addition to in-season rules.

- a) No MPL player can play finals in Division 1.

- b) A Club's top PL players can only play for PL team only either be a regular round or finals. Reserve grade players can play up for finals.
- c) A player is deemed a Premier League player if he/she is in Starting Eleven in more Premier League matches than in Premier Reserve grade and therefore will not be eligible to play finals in the Premier Reserve grade final series.
- d) Reserve grade players can play down for finals if the 5 players are nominated before each final and that the players nominated have not played more than 5 times for the Division 1 side.
- e) Division 1 players may play up in finals.
- f) A player cannot switch between Division 1 teams within one club for the finals.
- g) There is now restricted movement between WPL and WPLR during the finals. The starting 11 in the WPL team finals fixture cannot play in the WPLR finals fixture on that same round. Junior players are exempt by this rule.

3.8.2 A Player can qualify for only one final series except in accordance with provisions of Regulation 3.8.1.

3.8.3 Should a Team that is eligible for the final series be unable to participate then the Competition Administrator may replace that Team with the next best-placed Team from within the same Competition.

3.8.4 Finals Structure

Teams that placed third and fourth shall play in the Minor Semi-Final
Teams that placed first and second shall play in the Major Semi-Final with the winning Team proceeding directly to the Grand Final
The losing Team in the Major Semi-Final and the winner of the Minor Semi- Final shall play in the Preliminary Final
Winner of the Preliminary Final shall play the winner of the Major Semi-Final in the Grand Final
The winner of the Grand Final shall be declared as competition "Champions"

TABLE: FINAL SERIES

3.8.5 If scores remain level after normal playing time, extra time as specified in these Rules shall be played to determine a winner.

3.8.6 If after extra time the Match is still drawn, the winner shall be determined by penalty kicks in accordance with the Laws of the Game.

3.8.7 Where both Teams field an ineligible Player in a semi-final, or the result of a semi-final is declared a 'no result' then the winner of the other semi-final shall be declared as competition "Champions".

3.8.8 Extra time applies to MPL, WPL, MPLR and WPLR only. Division 1 go straight to penalties.

3.9 EXTRA TIME

3.9.1 Extra time to determine the winner of a Match shall be played in all Premier League division final series Matches only and the following shall apply:

- a) Two equal periods of fifteen (15) minutes shall be played.
- b) At the completion of normal time, a five (5) minute break shall be granted. All Players are to remain on the field and only the designated Team Officials from within the technical area can move onto the field of play. Substitutes or substituted Players are not permitted to enter the field of play.
- c) A coin shall be tossed to determine the direction of play for the first period of extra time.
- d) After the first period of extra time, the Teams shall change ends immediately. There shall be no half time break within extra time.
- e) Stoppage time shall be played.
- f) If scores remain equal at the conclusion of both periods of extra time, penalty kicks will be taken in accordance with the Laws of the Game to determine the winner of the Match.

3.10 VENUES AND ADMISSION CHARGES

3.10.1 The Competition Administrator, in consultation with Football NT and Clubs, shall have the power to determine venues for all Competitions.

3.10.2 The Competition Administrator, in consultation with the Football NT, shall determine the charge for admission to all Matches, at all venues, prior to the commencement of any Season.

3.10.3 Players or Club Officials who refuse to pay the prescribed admission charge shall be fined \$100/offence. The Competition Administrator may also apply further sanctions.

3.10.4 Clubs with which the Player or Club Official is associated shall also be fined \$100/offence. The Competition Administrator may also apply further sanctions.

PLAYERS	\$5
ADULTS	\$8
CHILDREN (15 and under)	free
STUDENTS/PENSIONERS	\$5
FAMILY PACKAGES	\$20 (2 adults/2 students)

TABLE: ENTRY FEE STRUCTURE

4 MATCH DAY

4.1 COACH ELIGIBILITY

4.1.1 From 2019, the minimum acceptable accreditation for a Club Coach of a Premier League Men's, Reserves or Women's Team shall be the FFA Senior Football Certificate. Note: All Coaches shall be registered into the PlayFootball system.

4.1.2 Any Club that fields a Team, where the Club Coach does not comply with rule 4.1.1, shall forfeit all match day points within that round of competition.

4.1.3 Any Club Coach, who fails to comply with rule 4.1.1, shall not be permitted to enter the field of play, Player's race, change rooms, technical area or substitute bench at any time before, during or after a Match.

4.2 PLAYER ELIGIBILITY

4.2.1 A Player is only eligible to play in a Match for a Club if they:

- a) have been registered in accordance with the FFA National Registration Regulations;
- b) has paid their full registration fee plus all outstanding money owed to Football NT, a Club and Competition Administrator;
- c) are not subject to a suspension; in accordance with rule 3.1;
- d) meet the applicable Competitions age group and gender guidelines
- e) meet Competition requirements for Final Series or playoffs, where applicable.

4.2.2 It is the responsibility of each Club to ensure the eligibility of its Players in accordance with these Rules.

4.2.3 Where a Club(s) believes that a player who is younger than 16 for boys and 14 for girls has the capacity to safely and competitively play within this competition, the Club(s) may apply to the Competition Administrator for a technical assessment

4.2.4 Where a Club has more than one Team within the same Competition the club must nominate which Players shall play for each Team. Players are eligible to play up for another Club Team, but Players are not eligible to play for any other Club Team within the same division or a lower division.

4.2.5 If there is a dispute about the eligibility of any Player, the Match Official must note the details on the Team Sheet and submit the Team Sheet to the Competition Administrator.

4.2.6 Any Club that wishes to lodge an official protest regarding the eligibility of a Player must do so in accordance with these Rules via email from club.

4.2.7 Any Club found to have played an ineligible Player shall be fined \$300 and the Match shall be awarded to the opposing Team with a score of 3-0 or the actual score of the Match, whichever is the greater.

4.2.8 Any Club found to have knowingly or willfully engaged in the "Ring-In" of a Player or Players in any Match shall be fined \$500.00 and the Match shall be awarded to the opposing Team with a 3-0 score or the actual score of the Match, whichever is the greater. The Club may also be cited to appear before the Disciplinary Committee.

4.2.9 Repeat offenders may incur additional sanctions, as determined by the Competition Administrator.

4.3 DETERMINATION OF MATCHES PLAYED

Only Players who are recorded on an official match card may take the field of play during a Match. Players listed on an official match card shall be deemed to have participated when calculating the number of qualifying Matches played. The official Team Sheet or SportsTG Log Report shall be the sole record and determinant of Matches played.

Decisions of the Competition Administrator under Rule 4.3 are final and shall be binding and not appealable.

4.4 NUMBER OF PLAYERS

4.4.1 A Competition Match may not start if either Team consists of fewer than seven (7) Players.

4.4.2 A Competition Match may not continue if either Team has fewer than seven (7) Players.

4.4.3 If a Match has commenced and is subsequently abandoned due to a Team being reduced to fewer than seven (7) Players, then the offending Team shall be deemed to have forfeited the Match and shall be sanctioned in accordance with Rule 4.12.

4.5 DURATION OF MATCHES

4.5.1 The duration of all Matches shall be as specified in Table: Competitions Structure and may include drinks breaks as per heat policy.

Competitions	Players	Substitutions	Playing Time	Half Time	Ball Size
Premier League	11 versus 11 with Minimum of 7 and maximum of 11 on field.	Maximum 5 Substitutes	2 X 45 Mins	15 Mins Maximum	5 (Pressure Equal To 8.5 Psi – 15.6 Psi)
Premier League Reserves		Unlimited During The Match			
Division one Men's					

TABLE: COMPETITONS STRUCTURE

4.6 FAILURE TO PLAY A MATCH

4.6.1 Any Team who without just cause fails to play a Match at the appointed date and time shall be deemed to have forfeited the Match.

4.6.2 The Club shall be fined \$500 and Match Officials shall be entitled to the Match fees normally payable and these fees shall be paid by the Team that forfeits the Match. Where a forfeited match is scheduled to be played at a Duty Club managed venue, the Duty Club shall be entitled to \$250 from the \$500 fine.

4.6.3 Any Team who has forfeited three (3) consecutive matches shall be asked to show cause as to why they should not be suspended or expelled from the Competition.

4.7 ABANDONED MATCHES

4.7.1 Matches in any Competition including final series may only be abandoned by a decision of the Match Official.

4.7.2 A Team, or members thereof, who due to their conduct cause a Match to be abandoned shall be deemed to have forfeited the Match.

4.7.3 If both Teams are responsible for conduct that leads to the abandonment of a Match, then the Match shall be deemed a "no contest" and no points shall be awarded to either Team and no Player points shall be gained from the Match. Additional sanctions may also be imposed by the Competition Administrator.

4.7.4 If a Match has been abandoned then Match reports are required to be submitted to the Competition Administrator, by Match Officials and Team officials, no later than 9.00am of the next business day following the Match.

4.7.5 If 72 minutes or more (Eighty Percent) of normal time of a Match has been played, then the score at the time of abandonment will stand. Normal time does not include time added or halftime.

4.7.6 If less than 72 minutes of normal time of a Match has been played before the time of abandonment, then the Match will be replayed in full at a time and venue to be determined by the Competition Administrator.

4.8 TEAM SHEETS

4.8.1 Each Team shall submit a completed Team Sheet to the Match Referee 30 minutes prior to the commencement of each Match. Clubs found to be in breach of this rule shall be fined \$200 per offence. Teams in Senior Competitions shall use the "Team Sheet" format prescribed by the Competition Administrator. If any club/team is not able to do so, then match officials must submit incident report for such.

4.8.2 Players cannot be added to the Team Sheet after the commencement of the Match.

4.8.3 The maximum number of Players that can be listed per Team on a Team Sheet is specified in Regulation 4.5.1.

4.8.4 In case, SportsTG unable to produce team sheet then manual hand-written team sheet is preferable under supervision of home ground official.

4.8.5 The numbers on the back of shirts shall correspond with the numbers on the Team Sheet and any change to a number must be done with approval of the Match Referee.

4.8.6 The only Players entitled to play in any Match are those registered Players who are listed on the Team Sheet before the commencement of the Match. Teams that field a Player contrary to this Rule shall be deemed to have played an ineligible Player.

4.8.7 At the conclusion of the Match the Referee shall note the scores at half time and fulltime, the goal scorers, any disciplinary action then sign the team sheet, enter results on SportsTG and lodge the team sheet with the Competitions administrator by 9.00am next business day. In the event a referee is not appointed for a match; home team official will be responsible for fulfilling within rule 4.8.6 and a copy of team sheet must be sent to competitions administrator by 9.00am next business day. Clubs found to be in breach of this rule shall be fined \$100.00

4.8.8 When a Player has been cautioned or sent off the Referee shall note on the Team Sheet the appropriate offense code for which the Player was cautioned or sent off. The Referee shall submit an Incident Report for the send-off offense to the Competition Administrator by 9.00am next business day, in accordance with Rule 4.15.2.

4.9 MATCH SHIRTS

4.9.1 Each Club shall register "Home" and "Away" its playing uniform with Football NT prior to the commencement of the Season. This shall include the shirt, shorts, and socks.

4.9.2 All Clubs must nominate a "Home" and "Away" playing uniform. The away playing uniform shall not clash with the home team playing uniform. A club's away playing uniform for players and a goalkeeper should preferably include a change of colour for shirts, shorts and socks.

4.9.3 It is a responsibility of the Away Team to ensure that an alternative playing uniform is available for each match day.

4.9.4 In all cases the goalkeeper clearly distinguishable from the colour of shirts worn by all other players and the referee.

4.9.5 Where the competition Administrator deems a club's proposed uniform to be too like another club it may veto use of the proposed uniform.

4.9.6 The Competition Administrator reserves the right to require all Club Teams to place a competition sponsorship logo on the right-hand breast or on the right sleeve of all match shirts in accordance with given uniform style guide. (see next page)



Figure: FNT Senior competitions playing strips style guide

4.10 MATCH BALLS

The Home Team shall provide the Match Officials with four (4) approved Match balls in accordance with regulation 4.5.1 (Competition Structure). Clubs found to be in breach shall be fined \$100 /offense.

4.11 MATCH OFFICIALS

4.11.1 FFA accredited Match Officials shall be supplied wherever possible, subject to available numbers as follows;

League Matches	a Referee and two assistant Referees
Final Series	A Referee, two assistant referee and a fourth Official.

Table: Appointment of Match Officials

4.11.2 Priority of Match Officials allocation shall be: 2019 Competition Structure

- a) Premier League Competition – Men and Women
- b) Premier Reserves – Men and Women
- c) All other Senior Competitions

4.11.3 In the event no accredited Match Official is present to officiate a Match the Home Team shall appoint a Referee to take charge of the Match. This shall take place within five (5) minutes of the scheduled kick-off time.

4.11.4 In circumstances where an Assistant Referee has not been appointed each Team is obliged to provide a Club Assistant Referee to assist the Referee as follows:

- a) If one Assistant Referee has not been appointed the Home Team shall provide an Assistant Referee.
- b) If two Assistant Referees have not been appointed both the Home and Away Teams shall provide one Assistant Referee each.

4.11.5 Teams found to be in breach of rules 4.11.3 and 4.11.4 shall be fined \$200 for failing to provide a Match Official(s).

4.11.6 Teams are obliged to play Matches regardless of whether the Competition Administrator Appointed Match Officials are present to officiate. Such Matches are to commence within ten (10) minutes of the scheduled kick-off time.

4.12 FORFEITS

4.12.1 Where a Match has been declared a forfeit, the Match shall be recorded as a win to the non- forfeiting Team with a score of 3-0.

4.12.2 Any Team deciding to forfeit a scheduled Match shall inform the Competition Administrator in writing by 5 pm of the Wednesday prior to a weekend fixture or no later than 2 working days prior to the scheduled kick-off time of a weekday fixture. A Team failing to notify the Competition Administrator within the required time Shall be fined \$500.

4.12.3 A Team not ready to commence a Match within ten (10) minutes of the scheduled kick-off time shall be deemed to have forfeited the Match and shall be fined \$500. Where a match has commenced, and a Team has fewer than the minimum number of Players required for completion of the Match, the Match shall be awarded to the opposing Team with a score of 3-0 or the actual score of the Match, whichever is greater.

4.12.4 Where a Match is forfeited under this Rule all appointed Match Officials shall be entitled to the Match fees (if the forfeit is on match day) normally payable and these fees shall be payable by the Club which forfeits the Match.

4.13 TECHNICAL AREA

4.13.1 The following rules shall be enforced where technical areas are provided at venues. Players and Officials shall be registered of PlayFootball and shall be subject to FIFA Laws of the Game whilst sitting on the Team bench or present within the Team technical area.

4.13.2 A maximum of nine (9) persons comprising five (5) Players and four (4) Team Officials are entitled to sit on the Team bench or be present within the Team technical area during any Match. Players and Team Officials are to remain seated at all times during a Match, whilst in the Team technical area, with only one (1) Team Official allowed to stand within the Team technical area to relay instructions.

4.13.3 All Players and Team Officials shall be suitably attired when present within the Team technical area. All Players must wear their Club match uniforms, boots and substitute bibs. All Team Officials shall wear closed shoes, shorts and their Club polo shirt as a minimum acceptable standard and must put on FNT Provided Accredited identification all time while in technical area. Note: thongs, sandals or work boots are not recognized as meeting the minimum acceptable standards and bare feet are strictly prohibited at any time throughout a Match. Clubs which fail to comply with this rule shall be fined \$250 per offence and additional sanctions may apply for repeat offences.

4.13.4 Team Officials not listed onto the Team Sheet shall not be permitted to sit on the Team bench or to be present within the Team technical area or the competitions area at any time during the Match. Clubs which fail to comply with this rule shall be fined \$250 per offence and additional sanctions may apply for repeat offences.

4.13.5 Players and Officials within the Team Technical Area and the Competitions Area shall behave in a responsible manner and shall not use offensive, insulting and abusive language and/or gestures at any time. Clubs which fail to comply with this rule shall be in breach and shall be fined \$250 per offence and additional sanctions may apply for any repeated offences. Any Team Official that is expelled from the field of play, being the Team technical area, shall incur a minimum one (1) match suspension. The official shall be fined a minimum of \$100.

4.14 INTERCHANGE AND SUBSTITUTIONS

4.14.1 All interchange or substitute Players shall be named on the Team Sheet and shall sit on the Team bench with a neutral colour vest within the designated Team technical area throughout the Match as per the Laws of the Game 2019/20.

4.14.2 All substitutes or interchanges are to be made known to the assistant Referee or fourth official who shall then notify the Referee of the proposed substitution or interchange.

4.14.3 All substitutions or interchanges within Competitions are at the discretion of the Referee and shall take place at the halfway line after the Referee has stopped play and signaled for the substitution to occur.

4.15 MATCH REPORTS

4.15.1 Match reports shall be submitted to the Competition Administrator by 59.00 am of the first business day following the Match for which the report is being lodged.

4.15.2 Match reports include: Send Off reports by Match Officials, Incident reports by Match Officials

4.16 GROUNDS

4.16.1 Duty Club Manager

All clubs will be provided with duty club manual and to complete such All Clubs shall nominate a duty club manager every week who shall complete the duty club manual and also perform such duties as listed below and as shall be directed from time to time by FNT.

- a) The duty club manager must be present at all matches
- b) The duty club manager must be aged at a minimum of 18 years.
- c) A duty club manager will be identified and introduced to the referee a minimum 30 minutes prior to the commencement of the match.
- d) The duty club manager must always wear an identifying bib.
- e) The duty club manager must be identifiable and visible to the match officials and spectators at matches.
- f) Ensure that the technical area is properly defined as laid down in the Laws of the Game and these Regulations.
- g) Take all reasonable steps to ensure the good order and behaviour of spectators
- h) Assist match officials where required (e.g. organise assistant referees) and assist with the security of the match officials whilst at the venue including escorting referees from the field of play at half and full time.

4.16.2 Exclusion Zone

All persons, apart from those named on the relevant team sheets, referees or assistant referees, must be behind fences surrounding enclosed pitches or a minimum of two (2) metres away from all sidelines or four (4) metres from all goal lines at all matches. Such an area shall be termed the "pitch exclusion zone".

Those grounds that are not enclosed are required to have marked a secondary line outside the field of play, preferably in an alternate colour identifying the pitch exclusion zone or by use of ropes and pegs which clearly outlines the area.

5 DISCIPLINE

5.1 FFA NATIONAL DISCIPLINARY REGULATIONS

5.1.1 The FFA National Disciplinary Regulations shall apply to any infringement of the Laws of the Game by any Player or Official.

5.1.2 The Club shall be responsible for any fine to their registered Player or Team Official.

5.2 YELLOW CARDS (CAUTIONS)

5.2.1 Sanctions

The following sanctions shall be imposed as a result of Players accumulating cautions during a Season:

Fifth (5th) caution	one (1) Match suspension and a \$100 fine payable by the Club.
Seventh (7th) caution	two (2) Match suspension and a \$200 fine payable by the Club.
Ninth (9th) caution	three (3) Match suspension and a \$300 fine payable by the Club.
Tenth (10th) caution	the Player shall be cited to appear before a Disciplinary Committee and shall be suspended until a Disciplinary Committee adjudicates on the matter.

5.2.2 For the purpose of this Rule cautions shall accumulate across all divisions including FFNT Cup Matches and the fines and the automatic suspensions specified are non-appealable.

5.2.3 If a Player receives two yellow cards during the same Match and therefore receives a red card, the two yellow cards shall be expunged from the Player's record.

5.2.4 If a Player receives a yellow card then a direct red card in the same match, the yellow card will not be expunged and will be counted within the Player's accumulation of yellow cards.

5.2.5 Where a Player has incurred a sanction under Rule 5.1.1 the Competition Administrator shall advise the Player's Club by 5.00 pm of the third business day after the receipt of the Team Sheet for the Match. Where the player has incurred as per rule 5.1.1 the player must serve that suspension in the competition where the majority of yellow cards were accumulated.

5.2.6 A Player shall remain suspended until any fine is paid in full to the Competition Administrator.

5.2.7 Accumulated cautions shall not carry over from the regular Season Competition into final series or promotion/relegation Matches.

5.2.8 If a Player transfer to another Club participating in a Competition during a Season:

- a) Cautions are transferred with the Player for the purpose of Rule 5.2.1
- b) Cautions are retained by the Club to which the Player was registered when the caution was received for the purpose of Rule 5.2.9.

5.2.9 Loss of Competition Points as a Result of accumulated Yellow Cards

- a) Teams shall have Competition points deducted as a result of accumulating cautions during the regular Season.
- b) The number of cautions that leads to the initial loss of Competition points shall be determined by taking the number of rounds in the regular Season and multiplying that number by two (2). This shall be known as the "Team Caution Limit". For example, if there are fifteen (15) rounds of Matches then the Team Caution Limit shall be thirty (30).
- c) When a Team has accumulated the number of cautions that equal the Team Caution Limit one (1) Competition point shall be deducted.
- d) One (1) Competition point shall be deducted for every ten (10) additional cautions accumulated by a Team in excess of the Team Caution Limit during the remainder of the Competition Season.

5.3 RED CARDS (EXPULSION)

5.3.1 The FFA National Disciplinary Regulations, 'Disciplinary Table of Offences', prescribes the mandatory minimum Sanction for send-off offences and offences against a Match Official.

5.3.2 A player who receives a red card must serve a mandatory match suspension.

5.3.3 Where a Player is sent off (issued a red card) during a Match, they are deemed to be an ineligible Player until the final scheduled Match of the round is completed. This means that they are not eligible to participate in any Competition in any official capacity, including but not limited to Player, Coach, Team Official, Match Referee, Assistant Referee or Ground Official for one week.

5.3.4 Player Sanctions

- a) The FFA National Disciplinary Regulations, 'Disciplinary Table of Offences', prescribes the Minimum Sanction for send-off offences and offences against a Match Official.
- b) The following automatic sanctions shall be imposed as minimum in addition, for Players accumulating red cards during the regular Season, Cup Competitions or Final Series.
- c) R7 offences are not applicable to this clause 5.3.3(b)

First expulsion	Minimum Sanction and \$150 fine payable by the Club.
Second expulsion	Minimum Sanction plus one (1) week suspension and \$300 fine payable by the Club.
Third expulsion	Minimum Sanction plus two (2) week suspension, \$500 fine payable by the Club and complete the Laws of the Game at the FFNT office.
Fourth expulsion	Minimum Sanction plus three (3) week suspension, \$750 fine payable by the Club and complete the Laws of the Game at the FFNT office.

5.3.5 Table: Offence Table

Such sanctions may be augmented by additional sanctions being imposed by the Competition Administrator in relation to the severity of an offence and/or repetitive offences by an individual.

- a) Where a Player has incurred a sanction in excess of the mandatory sanction, the Competition Administrator shall advise the Player's Club Delegate by the close of business on the third business day after the receipt of the Team Sheet for the Match in which the send-off occurred.
- b) If a Player transfers to another Club participating in a FNT Competition during the course of a Competition Season:

- i. Expulsions are transferred with the Player for the purpose of 5.2.2, and
 - ii. Expulsions are retained by the Club to which the Player was registered when the expulsion was received for the purpose of 5.2.5.
- c) Team Sanctions:
- i. Loss of Competition Points as a Result of Red Cards
 - ii. Teams shall have Competition points deducted as a result of accumulating red cards during the regular Season.
 - iii. For every five (5) red cards received by a Team for any offence excluding R7, that Team shall lose one (1) Competition point.

5.4 SUSPENSIONS

5.4.1 The Player must serve the suspension within that Competition and remain suspended from all Competitions until the suspension is served

5.4.2 Suspensions incurred by Players must be listed on that team sheet in terms of Matches shall be served in consecutive fixtures of that Team after the date of suspension (this includes regular Season, cup and final series fixtures).

5.4.3 Suspensions will carry over to a subsequent Season(s) where the player in the next season must be registered and active in play football platform and must appear on the team sheets under "Players Serving Suspensions" to count the number of match suspensions served. For clarity a player who is suspended for three weeks and serves one of those weeks in the season of the original offence and then the further two weeks in the next season must appear two team sheets to have effectively served the three-week original suspension.

5.4.4 Where the Club does not field a Team in the same Competition as the suspension was incurred during the previous Season the Competition Administrator shall determine the Competition in which the Player is to serve the suspension.

5.4.5 A Player under suspension shall not be permitted to play in trial or friendly Matches without the written permission of the Competition Administrator, who may include any conditions deemed appropriate.

5.4.6 Suspensions cannot be served in friendly Matches, unless the suspension was incurred in a friendly Match in accordance with the Disciplinary Regulations.

5.4.7 The Competition Administrator may, upon receipt of a written request from the Player, temporarily lift their suspension for representative or other Matches however, under no circumstances may a suspension be lifted for any Competition, cup or final series Matches conducted under the jurisdiction of the Federation.

5.4.8 Players or Team Officials who are under suspension are not permitted to enter the field of play, Player's race, change rooms, technical area or substitute bench at any time before or after the Match.

- a) Players who are in breach of this Rule will be fined \$150 per offence.
- b) The Player's Club who is in breach of this Rule will be fined \$250 per offence.

5.4.9 Players and Team Officials who are under suspension are permitted to attend playing venues but must comply with rule 5.4.8. Players and Club Officials who are under suspension can't relay instructions to their team.

5.4.10 Players or Team Officials who are under suspension may be allocated a place to sit or stand as directed by the Competition Administrator.

5.4.11 Players, Team or Officials who are under suspension shall be a minimum of 30 meters away in all directions of the field of play and the Team technical area.

5.4.12 Players or Team Officials who are under suspension will be a minimum of 30 meters away in all directions of the field of play and the Team technical area.

- a) Officials who are in breach of this Rule will be fined \$250 per offence.
Continuous breaches will be referred to the Disciplinary Committee.
- b) The Official's Club who is in breach of this Rule will be fined \$500 per offence.
Continuous breaches will be referred to the Disciplinary Committee.

5.5 ASSAULTS ON MATCH OFFICIALS

5.5.1 In the event of an alleged charge of assault (verbal, physical, psychological) committed upon a Match Official the Match Official concerned and any witnesses to the offense should submit in writing to the Competition Administrator a report in full, detailing the incident in chronological order, including any conversations.

5.5.2 Such reports shall be lodged to the Competition Administrator by 9:00 am of the second business day following the date of the Match or incident. If a Match official is not able to submit an incident report due to such assault, the player remains suspended until further notice.

5.5.3 At a minimum The Player shall be fined \$1500 for an assault on a match official, and the Club that the Player is associated with, shall be fined \$1000.

5.5.4 The player should confront the Disciplinary Committee and time will be arranged and notified to the player accordingly.

6 DISCIPLINARY COMMITTEE

6.1 NATIONAL DISCIPLINARY REGULATIONS and FFA CODE OF CONDUCT

6.1.1 The FFA National Disciplinary Regulations and FFA Code of Conduct apply to any infringement of the Laws of the Game by a Player or Official during a Match played under the auspices of Football NT, or any other infringement, of the Regulations and Codes of Conduct that govern the game of football in the Northern Territory, by a Club, a Club Official, Club Member or Club Spectator.

6.1.2 The FNT Senior Regulations supplements the National Disciplinary Regulations for all Competitions under the auspices of Football NT.

6.1.3 The FFA Code of Conduct applies to and is supplemented by the FNT Codes of Behaviour and Codes of Conduct and applies to the behaviour and actions of Clubs, Club Officials, Club Members and Club Spectators.

6.2 COMPOSITION OF DISCIPLINARY COMMITTEE

6.2.1 The Federation shall appoint a Disciplinary Committee consisting of at least three (3) members.

6.2.2 The Disciplinary Committee should, wherever possible, consist of:

- a) An independent Chair with Legal qualification;
- b) a former senior Player;
- c) a former Referee.

6.2.3 The Disciplinary Committee will not consist of persons who are current Players, members or officials of Clubs participating in Football NT Competitions.

6.2.4 Should the Chair of the Disciplinary Committee not be present the most senior member in continuous service shall act as Chair.

6.2.5 In the event of only two (2) members being available for a Disciplinary Committee hearing, subject to the consent of all parties, this shall constitute a quorum.

6.2.6 The Disciplinary Committee has jurisdiction to determine all grievances that arise under these Regulations be those matters on field or off field or matters referred to it by the Competition Administrator or FNT.

6.3 PROCESS FOR LODGING AN APPEAL

6.3.1 An appeal against an appealable decision made under these Regulations shall be made on Club letterhead and lodged with the Competition Administrator by 9.00am on the second business day following the receipt of the decision being appealed.

6.3.2 An appeal lodgment fee of \$500.00 must accompany the appeal.

6.3.3 The lodgment of an appeal does not stay any penalty imposed under these Regulations.

6.4 PROCEDURES OF THE DISCIPLINARY COMMITTEE

6.4.1 This Disciplinary Committee is to apply the FFA Grievance Resolution Regulations at the procedural application of its hearings.

6.4.2 The Disciplinary Committee may lay down its own rules of procedure in addition to those in the FFA Grievance Resolution Regulations, subject to the rules of procedural fairness and natural justice which it may vary as it sees fit from time to time and it shall not be subject to requirements of legal formality.

6.4.3 At a hearing by the Disciplinary Committee, the appellant's or the aggrieved party's case shall be presented first but nothing herein removes from any person the onus of proving any ground on which he/she relies.

6.4.4 Powers of The Disciplinary Committee

- a) The Disciplinary Committee shall deal with all matters referred to it by the Competition Administrator.
- b) The types of disciplinary sanctions are specified within both the FFA Grievance Resolution Regulations and the FNT Senior Regulations.
- c) The Disciplinary Committee may from time to time adjourn any hearing until such times, dates and places and for such reasons, as it sees fit.

6.5 EVIDENCE

6.5.1 In any disciplinary proceedings the official reports of the Match Officials in respect of the incident or event that is the subject of the complaint/charge, are prima facie proof of the facts contained within the reports.

6.5.2 A Match Official will not be required to attend to give evidence unless:

- a) The person charged disputes the accuracy of the report and requests the attendance of the Match Official(s), and the Disciplinary Committee is of the opinion that the request is reasonable and made in good faith; or

- b) The Disciplinary Committee is of the opinion that it is reasonable, and necessary, to require the attendance of the Match Official(s).

6.5.3 It shall be an offence for any person giving evidence before any Disciplinary Committee to deliberately mislead the Disciplinary Committee and the penalty for such an offence shall be a fine of between \$500 and \$5,000 along with any other sanctions determined fair and reasonable by the Disciplinary Committee.

6.6 DECISION

6.6.1 The Disciplinary Committee shall base its determination on;

- a) The application of the Disciplinary Regulations, FFA Grievance Resolution Regulations and on the Regulations and Codes of Conduct that govern the game of football in the Northern Territory;
- b) The evidence provided; and
- c) The scope of these Regulations.

6.6.2 The Disciplinary Committee shall advise the Competition Administrator of its determination within 48 hours of the determination being made. The Competition Administrator shall then advise the Club Delegate in writing within 48 hours of the determination being received.

6.6.3 Where no determination is advised to the Competition Administrator or where a hearing has not been held within the timeframes specified, then the appeal shall be deemed to have been upheld in full.

6.6.4 The person to whom the determination refers shall not contact the Competition Administrator or the Federation. The responsibility of advising the person of the outcome of the hearing rests with their Club Delegate.

6.6.5 The appeal fee shall be forfeited in the event of the protest not being upheld in full.

6.6.6 If the appeal is upheld in full one hundred percent (100%) of the appeal fee shall be refunded to the appellant.

6.7 APPEALS

All parties to a Disciplinary Committee hearing and the Competition Administrator shall have the right of appeal against a determination of the Disciplinary Committee such appeals shall be made in accordance with the FFA's grievance process and FFA Statutes.

7 CHARGES AND DISPUTE RESOLUTION

For the purposes of these Regulations, FFA has implemented a National Code of Conduct that seeks to promote and strengthen the reputation of Football in Australia by establishing a standard of performance, behaviour, and professionalism for its participants and stakeholders. In addition, it seeks to deter conduct that could impair public confidence in the honest and professional conduct of Matches or in the integrity and good character of its participants. Spectator Conduct at Matches is subject to the FFA National Spectator Code of Behaviour.

7.1 LODGING A COMPLAINT OR CHARGE.

7.1.1 Where any Team, Club, Player, Coach, Official or Match Official is charged with an offense, the charge shall be outlined in writing by the Competition administrator, FNT or FFA and contain the particulars of the alleged offense.

7.1.2 If a third party wishes to make a complaint under the Code of Conduct, that complaint must be made by a written report which must be delivered during normal business hours by fax, e-mail or hand delivered and confirmed by posted mail to the Competition Administrator. The report shall be lodged within seven (7) days of the date of the incident occurring to which the complaint or charge refers.

7.1.3 Charges or complaints laid by the Competition Administrator FNT or FFA shall not be restricted to the time limits referred to in 7.1.

7.2 PROTEST MATCH RESULTS

7.2.1 Protests regarding the incorrect recording of a Match result or the eligibility of a Player must be made in writing and lodged with the Competition Administrator by 5.00pm of the second business day following the conclusion of the Match.

7.2.2 All decisions of the Match referee are final and binding as far as the result of the match is concerned and no protest can be lodged.

7.2.3 The Competition Administrator shall provide a copy of the protest to the Delegate of the opposing Club participating in the Match within forty-eight (48) hours of receiving the protest.

7.2.4 All protests regarding the incorrect recording of a Match result or the eligibility of a Player shall be lodged for review to the Competition Administrator.

7.3 MISTAKEN IDENTITY

7.3.1 If a Player claims the genuine mistaken identity, the Club may lodge an appeal to the Competition Administrator by 5.00pm of the second business day following the issue of the Disciplinary Infringement Notice.

7.3.2 The Competition Administrator will investigate the claim and decide as to whether to allow or dismiss the claim. The Competition Administrator may refer the matter to the Disciplinary Committee for determination at its entire discretion.

7.3.3 If the appeal is upheld, the Competition Administrator or Disciplinary Committee shall have the power to determine the identity of the true offender and shall impose such penalty upon that person as would have been imposed upon the appellant.

7.4 GRIEVANCE PROCEDURE

Each person agrees to submit exclusively to Football NT's and FFA's Statutes and Regulations, including, the Grievance Resolution Regulations and no person may institute or maintain proceedings in any court of law or tribunal (other than the limited right of appeal to the Court of Arbitration for Sport in accordance with the FFA Statutes).

7.5 AMMANDMENT OF RULES

FFNT reserves the right to alter or amend rules from time to time if required.

8 FINANCE

8.1 REGISTRATION FEES

8.1.1 Football NT shall determine the annual schedule of fees and payment timetable prior to calling for nominations from Clubs.

8.1.2 There are four components that comprise the total Registration Fee paid by a Player to a Club to enable them to register to participate in an FNT Competition:

- a) FFA National Registration Fee as determined by FFA
- b) Football NT Fee as determined by Football NT that includes insurance, development and administration fees;
- c) Competition Fee set by the Competition Administrator to cover administrative costs in conducting the Competition;
- d) Cub levy set by each individual Club.

8.1.3 All levies must be documented within PlayFootball (National Registration Database) and made available to all Players at the time of registration.

FNT Player Registration Fees for 20120	
MiniRoos (age 5 to 11 years)	\$129.00 (includes FFA levy of \$14.00)
Juniors (ages 12 to 18 years)	\$179.00 (includes FFA if levy \$14.00)
Seniors – Division 1	\$228.00 (Includes FFA Levy of \$33.00)
Men's Premier league and Reserves	\$318.00 (includes FFA levy of \$33.00 for 18+ Players and \$14 for Under 18)
Women's Premier League and Reserves	\$301.00 (includes FFA levy of \$33.00 for 18+ Players and \$14.00 for Under 18)
Note: as was the case in 2018, players will pay a \$5.00 entry fee into the stadium on match day	
FNT Referee Registration Fees for 2020	
Referee registration fee	Once again, no fee will be charged

SUMMARY TABLE – REGISTRATION FEES 2020

8.2 MATCH FEES

8.2.1 Where applicable, Clubs will be invoiced monthly for costs associated with a Match including:

- a) Match Officials payments;
- b) Ground hire
- c) Line marking
- d) Security;
- e) Other costs associated with staging the Match.

8.3 PAYMENT OF INVOICES

8.3.1 All fees, levies, ground hire charges or fines are payable by the due date for payment as stated on the invoice or before first round of finals series (whichever is earlier) unless agreed otherwise. Clubs not doing such may not be allowed to participate in final series.

8.3.2 For the avoidance of doubt, debts shall include monies owed to Football NT or other Clubs. A Club may challenge individual fees included in an invoice however payment of the unchallenged components of the invoice is required to be made by the due date for payment, as stated on the invoice.

8.4 8.4. SANCTIONS

8.4.1 Should the Competition Administrator not be satisfied with the given reason for non-payment of an outstanding debt payment may be pursued through a debt collection service.

8.4.2 All outstanding debts must be paid in full before any nominations will be accepted for a new Season.

8.5 FINES

At its absolute discretion the Competition Administrator or Football NT may waive or reduce Club's fines and penalties.

8.6 GATE REVENUE

All monies derived from entrance fees to Football NT Matches shall remain the property of the Football NT.

8.7 RECORD MAINTENANCE

All Clubs that participate in Matches sanctioned by Football NT shall maintain financial records in accordance with the Associations Act (Northern Territory).

8.8 BONDS

8.8.1 Football NT may implement and determine a bond prior to the commencement of a Competition. Bond monies are held in trust for a period determined by the Competition Administrator.

8.8.2 Clubs may be asked to lodge a bond for each senior men's and women's Team at the time of the acceptance of their nomination into a Competition.

8.8.3 Outstanding debts may be deducted from any bond monies if implemented.

8.8.4 Where a Club requires their bond monies to be refunded at the conclusion of the playing Season:

- a) the request must be made in writing at least fourteen (14) days prior to the end of the Competition;
- b) Outstanding debts shall be deducted from the bond monies prior to any refund being made;

8.8.5 Clubs shall lose bond monies in the following circumstances:

- a) Withdraws a Team(s) from the Competition;
- b) Club official(s), Player(s) or supporters are found guilty of bringing the game into disrepute or for violent conduct.

9 INTERPRETATIONS AND DEFINITIONS

9.1 INTERPRETATIONS

In these Regulations, unless a different intention shall appear:

- a) word importing the singular number only shall include the plural number and vice versa;
- b) words importing the masculine gender only shall include the feminine gender;
- c) words denoting persons include incorporated and unincorporated Teams and Clubs; and
- d) words or expressions shall be interpreted in accordance with the provisions of the Interpretation Act and that Act as in force on the date on which these Regulations are adopted by Football NT.

9.1.1 References to persons include their respective executors, administrators, personal representatives, and successors in title (as the case may be).

9.1.2 Expressions referring to writing are construed as including references to printing, lithography, photography, and other modes of representing or reproducing words in a visible form.

APPENDIX A – TABLE OF OFFENCES

RECOMMENDED SANCTIONS FOR SERIOUS INFRINGEMENTS

(In accordance with the FFA National Disciplinary Regulations & Table of Offences for Players)

A.A. OFFENCES BY PLAYERS*

Offence Code	Offence Description	Grading Guidelines	Minimum Suspension
R1	Serious foul play (Typically, but not limited to, serious foul play when the ball is in play)	Serious foul play tackle	One (1) week
		Attempting to gain possession of the ball using excessive force	Mandatory + One week
		Conduct that endangers the safety of an opponent in a contest for the ball or has the potential to cause injury	Mandatory + Two Week
		Conduct causing minor injury	Mandatory + Three Weeks
		Conduct causing serious injury	Mandatory + Four Weeks
R2	Violent Conduct (Typically, but not limited to, serious foul play when the ball is not in play, and/or pre-mediated violent conduct)	Excessive conduct when the ball is not in play or playing distance	Mandatory + One Week
		Violent conduct when the ball is not in play or playing distance	Mandatory + Two Week
		Serious and/or premeditated violent conduct when the ball is not in play or playing distance	Mandatory + Four Week
		Serious violent conduct that has caused bodily harm or responsibility for a violent melee	Mandatory + Six Week
R3	Spitting at an opponent or any other person	Spitting at or towards an opponent or any other person	Mandatory + Five Week
		Spitting on an opponent or any other person	Mandatory + Eight Week
R4	Denying goal-scoring opportunity	Denying the opposing team, a goal or an obvious goal-scoring opportunity by deliberately handling the ball (except a goalkeeper within their penalty area)	One (1) Week
R5	Denying goal scoring opportunity	Denying an obvious goal-scoring opportunity to an opponent moving towards the opponent's goal by an offence punishable by a free kick	One (1) Week
R6	Offensive, insulting, abusive or intimidating language and/or gestures	Using language and/or gestures in frustration	One (1) Week
		Using language and/or gestures directed at another person	Mandatory + One week
		Incitement to violence, or repeated use of offensive language and/or gestures, to another person	Mandatory + Four week
		Use of discriminatory, homophobic, racist, religious, ethnic or sexist language and/or gestures	Mandatory + Eight week
R7	Second caution	2 nd Yellow Card in a Match	One (1) Week

+ Where the Offence giving rise to the Red Card was committed against a Match Official, the applicable Minimum and Maximum Suspensions are those set out in Table A.B.

+ A Suspension greater than the applicable Maximum Suspension may be imposed by a Body only in Exceptional Circumstances that must be detailed in the Notice of Charge or a Committee/Tribunal's Determination.

A.B. OFFENCES BY PARTICIPANTS AGAINST MATCH OFFICIALS * **

S.N.	Offence Description	Minimum Suspension
1	Fail to abide by or comply with a direction of a Match Official	One (1) Week
2	Disputing a decision of a Match Official or dissent [R6 for Players]	One (1) Week
3	Using language or gestures in frustration [R6 for Players]	One (1) Week
4	Use offensive, insulting or abusive language and/or gestures (isolated incident) [R6 for Players]	Mandatory + Three Weeks
5	Use offensive, insulting or abusive language and/or gestures (repeated and/or excessive conduct) [R6 for Players]	Mandatory + Five Weeks
6	Provocation or incitement of hatred or violence [R6 for Players]	Mandatory + Eight Weeks
7	Use of discriminatory, homophobic, racist, religious, ethnic or sexist language and/or gestures [R6 for Players]	Mandatory + Eight Weeks
8	Threatening or intimidating language or conduct towards a Match Official [R6 for players]	Mandatory + Eight Weeks
9	Threat of physical violence towards a Match Official or his/her family or property [R6 for Players]	Twelve (12) Months
10	Inappropriate contact with a Match Official [R2 for Players]	Mandatory + One Week
11	Pushing a Match Official [R2 for Players]	Twelve (12) Months
12	Tripping a Match Official [R2 for Players]	Twelve (12) Months
13	Striking a Match Official with a ball or other object [R2 for Players]	Two (2) Years
14	Punching, kicking, elbowing or striking a Match Official [R2 for Players]	Two (2) Years
15	Spitting at or towards a Match Official [R3 for Players]	Twelve (12) Months
16	Spitting on a Match Official [R3 for Players]	Two (2) Years

A.C. OTHER OFFENCES BY MEMBER # **

S.N.	Offence Description	Minimum Participant Sanction	Minimum Club Sanction
1	Unauthorised entry onto the Field of Play	Eight Weeks	Such penalty as Football NT or the grievance committee determines (if any)
2	Fail to abide by or comply with a reasonable direction of an Official (other than a Match Official) or Football NT employee or representative in relation to conduct and/or behaviour at a Match	Eight Weeks	Such penalty as Football NT or the grievance committee determines (if any)
3	Unsportsmanlike or unprofessional behaviour	Eight Weeks	Such penalty as Football NT or the grievance committee determines (if any)
4	Failure to provide a safe environment for Participants or to maintain public order at a Match	Twelve Months	Such penalty as Football NT or the grievance committee determines (if any)
5	Failing to provide identifying details of an individual when reasonably requested to do so by a Match Official or Football QLD employee or representative	Eight weeks	Such penalty as Football NT or the grievance committee determines (if any)
6	Use offensive, insulting or abusive language and/or gestures (isolated incident)	Twelve weeks	Such penalty as Football NT or the grievance committee determines (if any)
7	Use offensive, insulting or abusive language and/or gestures (repeated and/or excessive conduct)	Twenty-Six Weeks	Such penalty as Football NT or the grievance committee determines (if any)
8	Provocation or incitement of hatred or violence	Twelve Months	Such penalty as Football NT or the grievance committee determines (if any)
9	Use of discriminatory, homophobic, racist, religious, ethnic or sexist language and/or gestures	Twelve Months	Such penalty as Football NT or the grievance committee determines (if any)
10	Participating in a melee (non-violent)	Two Months	Such penalty as Football NT or the grievance committee determines (if any)
11	Instigator of a melee (non-violent)	Three Months	Such penalty as Football NT or the grievance committee determines (if any)
12	Participating in a violent melee	Twenty-Six Weeks	Such penalty as Football NT or the grievance committee determines (if any)
13	Instigator of a violent melee	One Year	Such penalty as Football NT or the grievance committee determines (if any)

2020 Senior Regulations of FNT Competitions

14	Assault/striking	One Year	Such penalty as Football NT or the grievance committee determines (if any)
15	Violent conduct	One Year	Such penalty as Football NT or the grievance committee determines (if any)
16	Serious violent conduct (including, but not limited to, spitting at or on a Player, Spectator, Club Official, Team Official or FNT employee or representative including media and sponsors)	Two years	Such penalty as Football NT or the grievance committee determines (if any)
17	Damaging property/equipment	One Month	Such penalty as Football NT or the grievance committee determines (if any)
18	Showing Contempt	Six Weeks	Such penalty as Football NT or the grievance committee determines (if any)
19	Breach of the prohibition on dual registration (as per article 4.9 of the FFA National Registration Regulations)	\$300.00 fine and Two weeks	Club fined \$300.00 OR Such penalty as Football NT or the grievance committee determines (if any)
20	Breach of Football NT Rules and Regulations or FFA National Registration Regulations relating to registration (other than dual registration) and/or competitions	Such penalty as Football NT or the grievance committee determines (if any)	Club fined \$300.00 OR Such penalty as Football NT or the grievance committee determines (if any)
21	Possessing a Prohibited Item at a Match, Fixture or Football NT event	\$500.00 fine and Twenty-six weeks	Club fine of \$500.00 OR Such penalty as Football NT or the grievance committee determines (if any)
22	Throwing missiles including, but not limited to, on to the Field of Play or at other Spectators	\$500.00 fine and One Year	Club fine of \$500.00 OR Such penalty as Football NT or the grievance committee determines (if any)
23	Bring in to (or attempting to bring into) a stadium, venue, ground or centre national or political flags or emblems (except for the recognised national flags of any of the competing teams) or insulting, offensive, inappropriate, religious or political banners or slogans, whether written in English or a foreign language	\$500.00 fine and twenty-six weeks	Club fine \$500.00 OR Such penalty as Football NT or the grievance committee determines (if any)
24	Letting off incendiary device(s) or fire(s)	\$500.00 fine and Twenty-six weeks	Club fine of \$500.00 OR Such penalty as Football NT or the grievance committee determines (if any)
25	Group of Spectators uttering insulting words or sounds	Four weeks	Club fine \$300.00 OR Such penalty as Football NT or the grievance committee determines (if any)

2020 Senior Regulations of FNT Competitions

26	Breach of a Suspension, Notice of Suspension or Determination	Such penalty as Football NT or the grievance committee determines (if any)	Such penalty as Football NT or the grievance committee determines (if any)
27	Betting, match-fixing or corruption (as per clause 4 of the FFA Code of Conduct)	\$1000.00 fine and One year	Club fine \$500.00 OR Such penalty as Football NT or the grievance committee determines (if any)
28	Misconduct and/or Bringing the game into Disrepute	\$500.00 fine and Twenty-six weeks	Club fine \$1000.00 OR Such penalty as Football NT or the grievance committee determines (if any)
29	<p>Detrimental Public Comment (including Media and Social Media)</p> <p>Including but not limited to, comments that:</p> <ul style="list-style-type: none"> i. denigrate or criticise Football NT (including any of its staff and Board), FFA or any of their commercial partners; ii. denigrate or criticise another Member, whether in relation to incidents that have occurred in a Match/Fixture or otherwise; iii. denigrate or criticise a Participant by inappropriately commenting on any aspect of his or her performance, abilities or characteristics; iv. refer to the likely outcome of a matter being investigated by Football NT or a matter or hearing before a Body; v. criticise the outcome of a Football NT investigation; vi. criticise the decision of a Body; vii. criticise a Body or any of its members; or viii. criticise any evidence, submission or other comment made by any person at or in relation to a matter or hearing before a Body 	\$500.00 fine and Twenty-six weeks	Club fine \$1000.00 OR Such penalty as Football NT or the grievance committee determines (if any)
31	Other action or behaviour in breach the FFA Code of Conduct, the FFA National Registration Regulations, the FFA Spectator Code of Behaviour and/or the FFA National Member Protection Policy not identified elsewhere in this Table	\$500.00 fine and Eight weeks	Club fine of \$500.00 OR Such penalty as Football NT or the grievance committee determines (if any)
32	Threatening or intimidating language or conduct towards an individual	\$500.00 fine and Twenty-six weeks	Club fine \$1000.00 OR Such penalty as Football NT or the grievance committee determines (if any)
33	Threat of physical violence towards an individual or his/her family or property	\$500.00 fine and Twenty-six weeks	Club fine \$1000.00 OR Such penalty as Football NT or the grievance committee determines (if any)

* and ** above include lengthier sanctions than prescribed by FFA to reflect the strategic priority of FNT in this area to get an immediate improvement in players behaviour.

This Appendix provides Competition-specific information for use by Clubs, Teams and Team Officials. This Appendix is a formal part of the Competition Rules and as such breaches may incur sanctions in accordance with the Competition Rules.

* The offences set out in Tables A.B and A.C are not intended to be exhaustive and the Executive may bring any charge pursuant to FNT By Law 8.

Table A.C. sets out the Minimum Sanctions that may be imposed by the Executive or a Tribunal for the offences set out in that Table. The Executive or a Tribunal may impose any of the other sanctions set out in Table A.A, A.B and A.C. in addition to a Suspension or Sanction. For example, a Player who receives a four (4) week Suspension for using offensive, insulting or abusive language and/or gestures towards a Match Official may also be required to successfully complete a referee's course and be required write a written apology to Match official.

APPENDIX B - COMPETITIONS FINES

ITEMS	DETAILS	REGULATIONS	FEEES
1	Double registration	2.7.3	\$500
2	Nomination after team-nomination cut-off date	3.1.2	\$200
3	De-registration	3.3.4.1	\$200
4	Team Withdrawal	3.7.3 (c)	\$1000
5	Failure to play an eligible player	4.2.8	\$250
6	Technical Area Breach	4.13.2	\$250
7	Failure to Play Match	4.6.2	\$300
8	Failure to Lodge a Completed Team Sheet	4.8.1	\$200
9	Failure to provide Approved Match Ball	4.10	\$100
10	Yellow Card (Cautions)	5.2.1	\$100
11	Red Card (Expulsion)	5.3	\$150
12	Appeal	6.3	\$500
13	Give false or misleading information	6.5.3	Up to \$5,000
14	Assault on Match Officials	5.5.3	\$1000-\$1500